



REIMAGINING FRANKLIN HIGH SCHOOL



+



**COMMUNITY OPEN HOUSE
NOVEMBER 20, 2013**

PUBLIC PROCESS TO DATE

June 13, 2013 – Design Advisory Group (DAG) Kick

July 25, 2013 – DAG Meeting #2

August 8, 2013 – DAG Meeting #3

August 19, 2013 – DAG Meeting #4

September 11, 2013 – DAG Meeting #5

September 21, 2013 – Community Design Workshop

October 2, 2013 – DAG Meeting #6

October 4, 2013 – Sustainability Design Workshop



Dull Olson Weekes – IBI Group Architects
Portland Public Schools – Franklin HS Modernization

21st Century Learning in an Historic Building
November 20, 2013



PUBLIC PROCESS TO DATE

October 4, 2013 – Sustainability Design Workshop

October 9, 2013 – Latino Parents Presentation

October 9, 2013 – PTSA Presentation

October 26, 2013 – Community Design Workshop

October 28, 2014 – FHS Staff Presentation

October 31, 2013 – FHS Student Presentation

November 4, 2013 – FHS Student Follow-up

November 5, 2013 – DAG Meeting #7

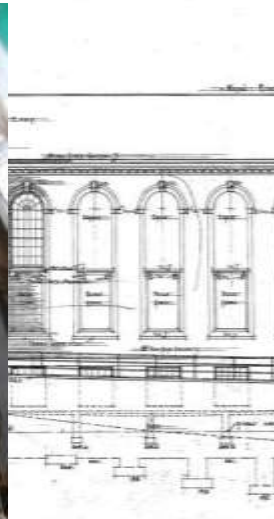


Dull Olson Weekes – IBI Group Architects
Portland Public Schools – Franklin HS Modernization

21st Century Learning in an Historic Building
November 20, 2013



DUE DILIGENCE



Dull Olson Weekes – IBI Group Architects
Portland Public Schools – Franklin HS Modernization

21st Century Learning in an Historic Building
November 20, 2013



HISTORICALLY & CULTURALLY SIGNIFICANT ELEMENT

Franklin High School

5405 SE Woodward St, Portland OR, 97206

[View Site in Google Maps](#)

Building Periods

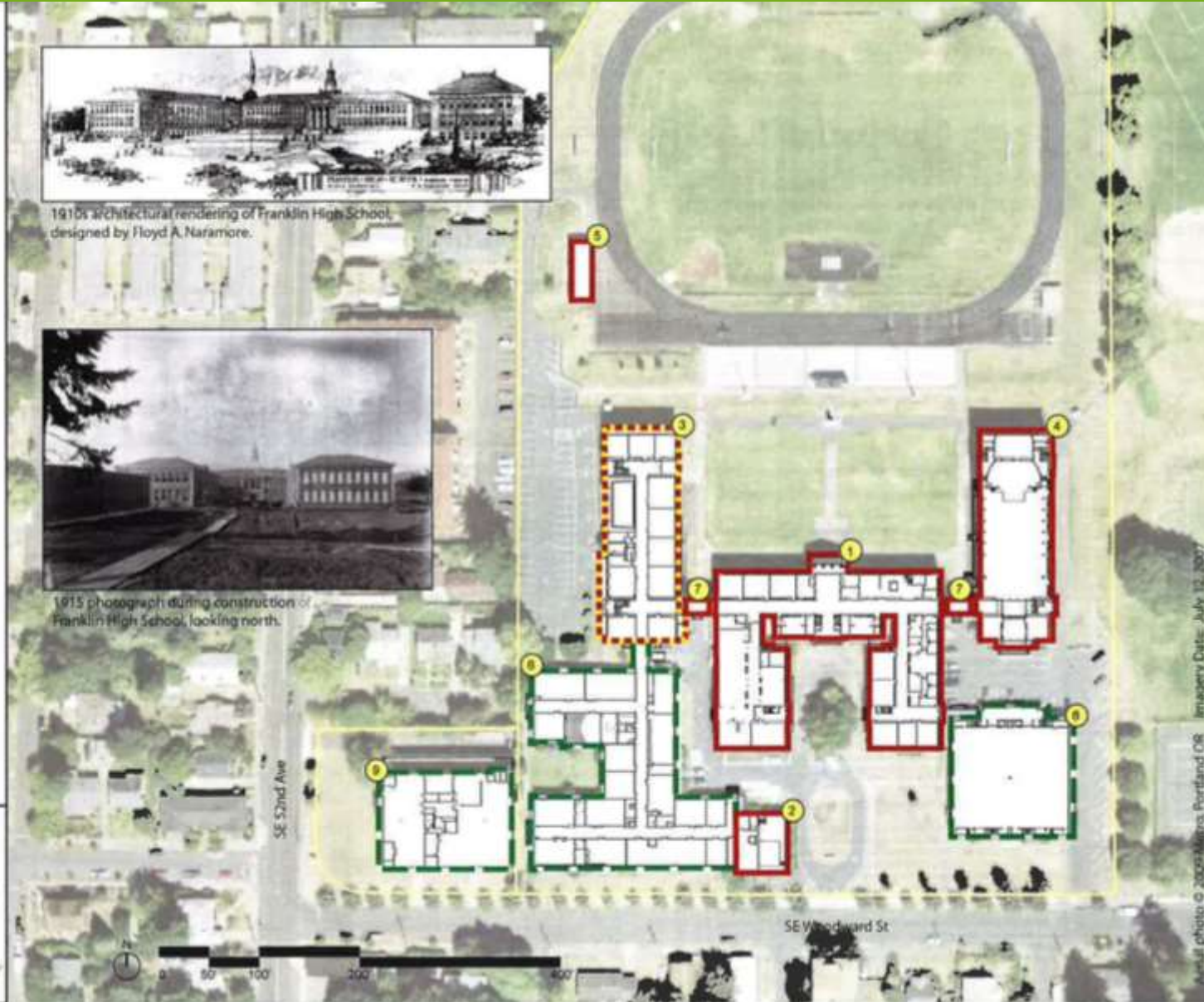
1. Original Building (215A), 1915
2. Boiler Building (215D), 1915
3. Gymnasium Building (215B), 1916 (remodeled to classrooms in 1986)
4. Auditorium Addition (215C), 1924
5. Field House, 1950
6. Classroom Wing (215D), 1950
7. Connecting Addition (215C), 1954
8. Gymnasium (215E), 1954
9. Shop Building (215F), 1970



1910s architectural rendering of Franklin High School, designed by Floyd A. Naramore.



1915 photograph during construction of Franklin High School, looking north.



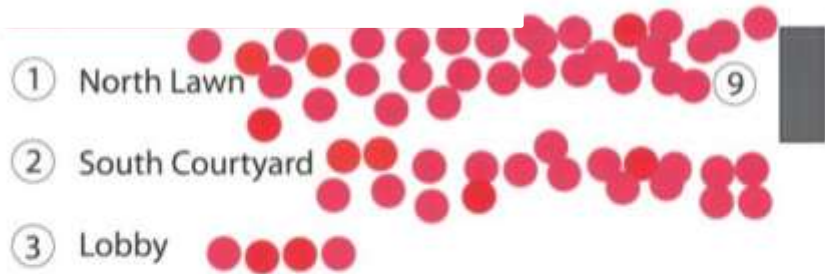
Historical Significance and Building Integrity

- Contributing High Significance
- Contributing Moderate Signif.
- Non-Contributing



Aerial photo © 2009 Mapbox, Portland OR Imagery Date: July 12, 2007

HISTORICALLY & CULTURALLY SIGNIFICANT ELEMENT



④ Stair

⑤ Benji Sculpture

⑥ Auditorium

⑦ Auditorium Entry

⑧ Cafeteria

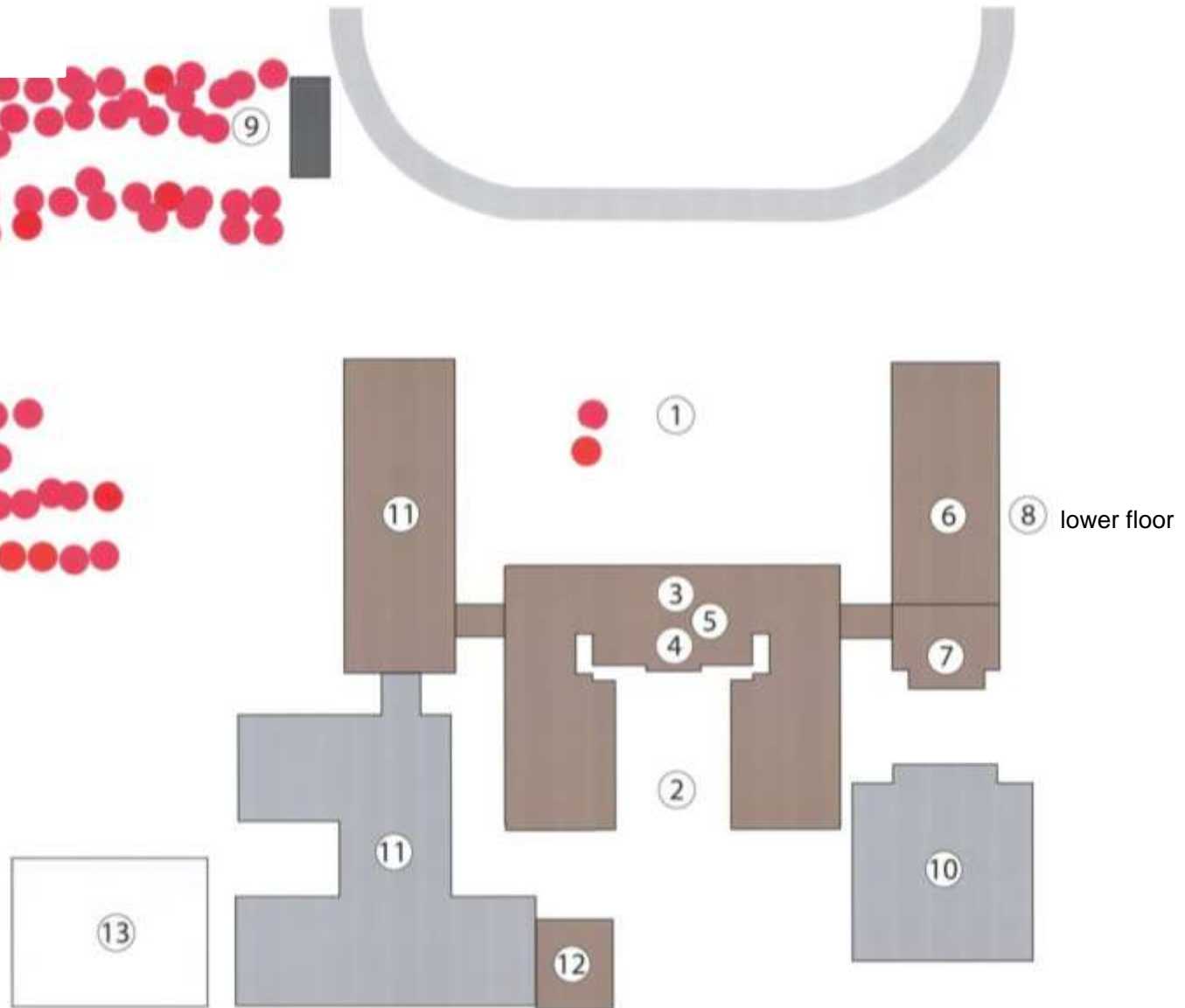
⑨ Fieldhouse

⑩ Gymnasium

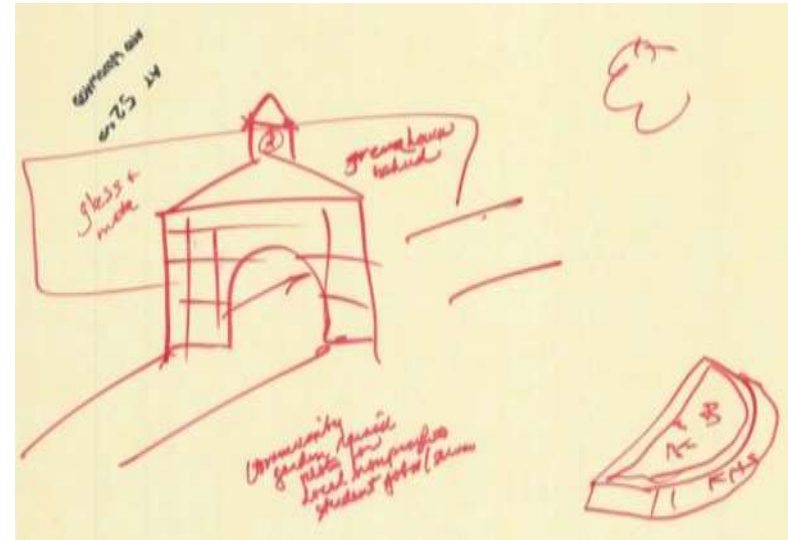
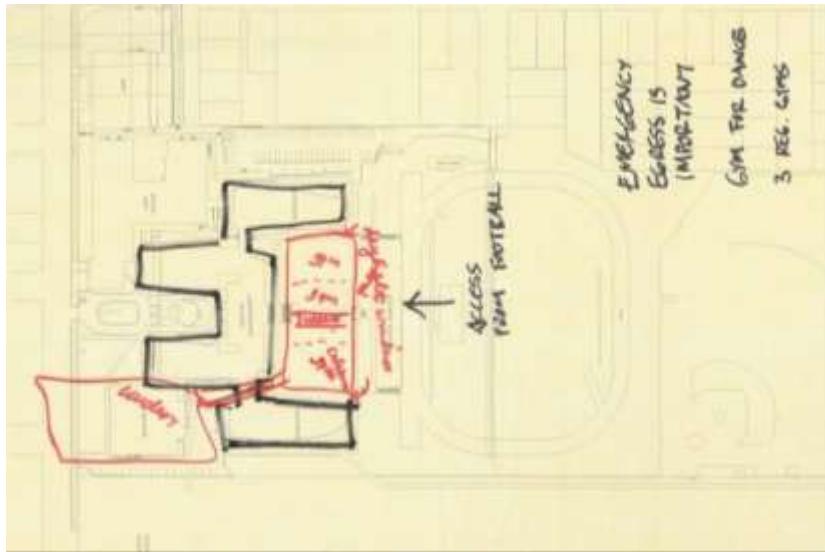
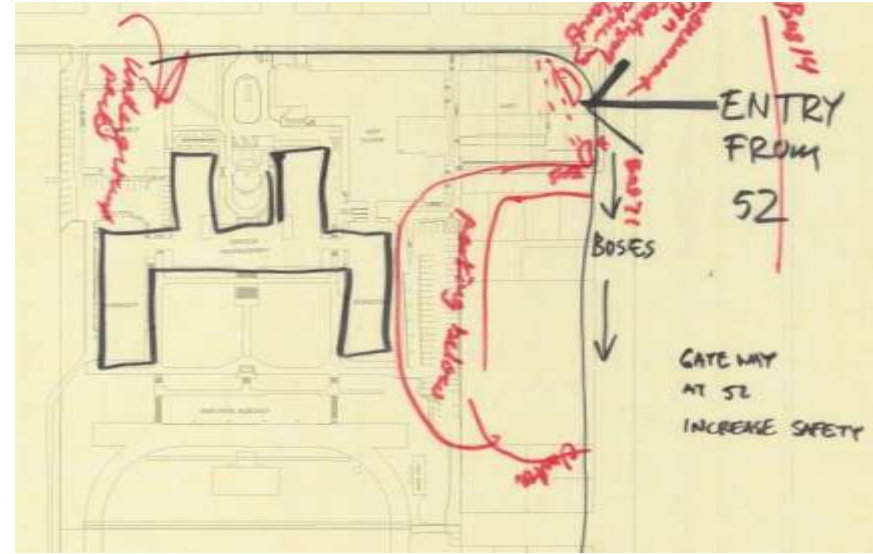
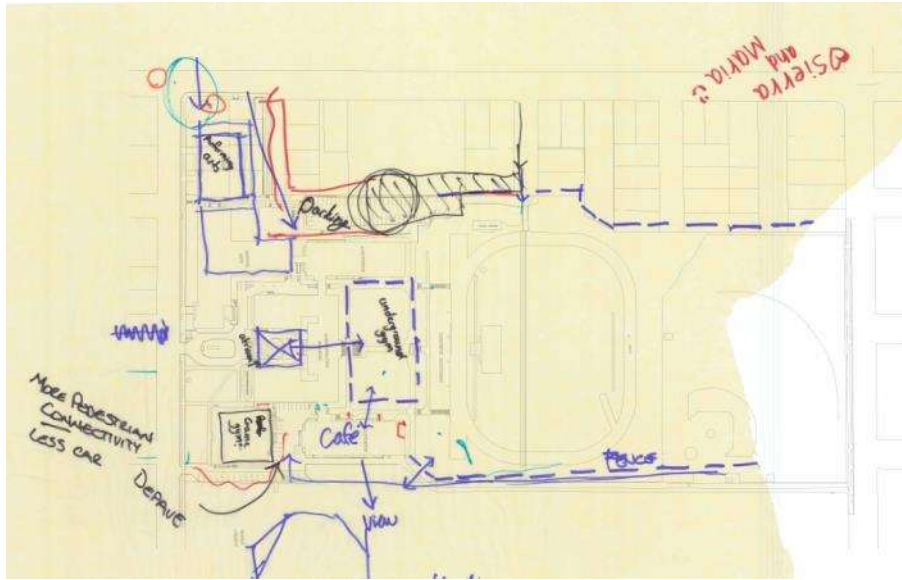
⑪ Classrooms

⑫ Boiler Room

⑬ Shop Building



FRANKLIN HS – DAG DESIGN WORKSHOP



FRANKLIN HS – COMMUNITY DESIGN WORKSHOP

COMMUNITY FEEDBACK

WHAT ARE THE KEY VALUES AND CHARACTERISTICS THAT ARE ESSENTIAL TO EMBED IN THE REIMAGINED FRANKLIN HS?

- connection to community
- safe / great views
- energy efficient, low to medium / sustainability, etc or an alternative opportunity

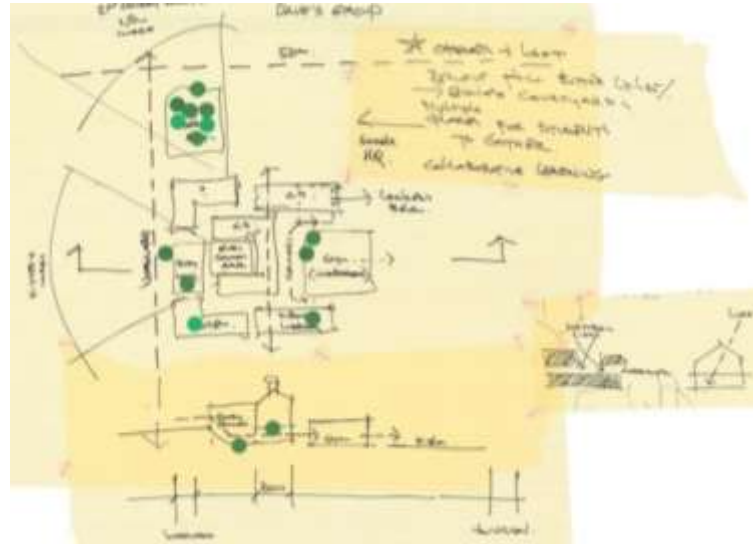
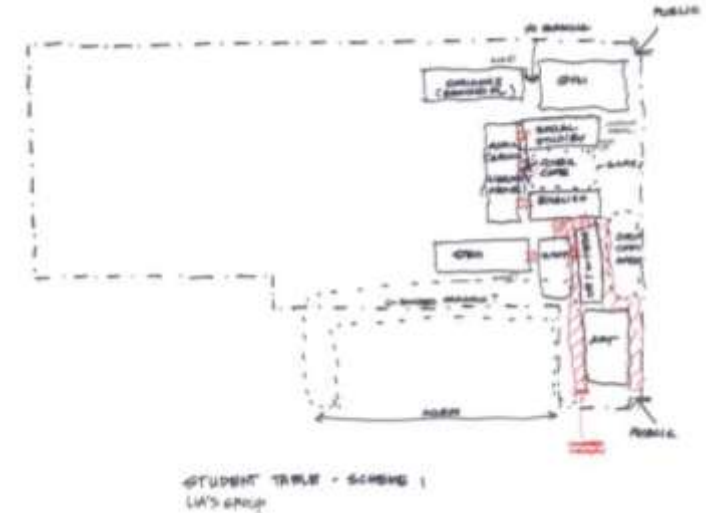
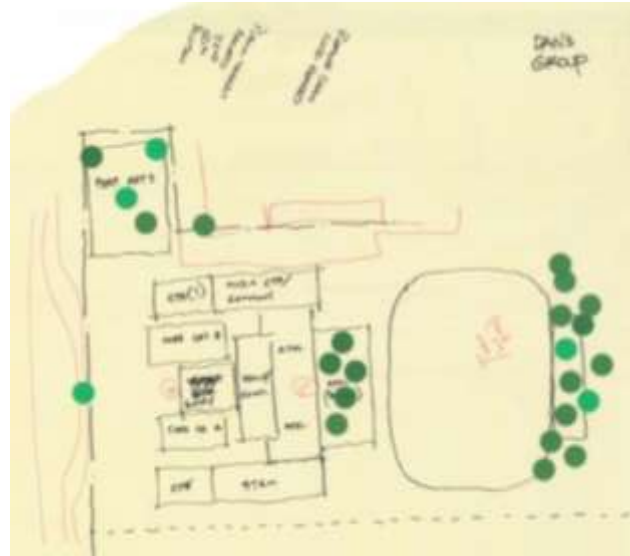
WHAT BUILDING OR SITE ELEMENTS ARE CULTURALLY SIGNIFICANT TO YOU? PLEASE NAME IN ORDER OF MOST SIGNIFICANT TO LEAST SIGNIFICANT

- North Lawn
- South Courtyard
- Lobby
- Star
- Key Sculpture
- Auditorium
- Cafeteria
- Footbridge
- Gymnasium
- Classrooms (1991)
- Ruler Room
- Shop Building
- Other?

FURTHER COMMENTS / IDEAS?

- 1) Add building extension of steel / aluminum
- 2) Trade location of steel to outdoor deck in exchange for study / lounge area with outdoor furniture - that has a great view of the site of the building - not just trees, but a view of the site
- 3) Add 2nd level outdoor seating for study / work space that is open to the lawn

FRANKLIN HIGH SCHOOL - COMMUNITY DESIGN WORKSHOP
OCTOBER 20, 2013



COMMUNITY FEEDBACK

WHAT ARE THE KEY VALUES AND CHARACTERISTICS THAT ARE ESSENTIAL TO EMBED IN THE REIMAGINED FRANKLIN HS?

- All new new building must be green and be an early alternative to the current building
- All new building must have outdoor furniture & view of the site of the building
- All new building must have outdoor furniture & view of the site of the building

WHAT BUILDING OR SITE ELEMENTS ARE CULTURALLY SIGNIFICANT TO YOU? PLEASE NAME IN ORDER OF MOST SIGNIFICANT TO LEAST SIGNIFICANT

- North Lawn
- South Courtyard
- Lobby
- Star
- Key Sculpture
- Auditorium
- Cafeteria
- Gymnasium
- Classrooms (1991)
- Ruler Room
- Shop Building
- Other?

FURTHER COMMENTS / IDEAS?

- Add outdoor seating for study / work space that is open to the lawn
- Add a study lounge area with outdoor furniture - that has a great view of the site of the building - not just trees, but a view of the site
- Add a study lounge area with outdoor furniture - that has a great view of the site of the building - not just trees, but a view of the site

FRANKLIN HIGH SCHOOL - COMMUNITY DESIGN WORKSHOP
OCTOBER 20, 2013



Dull Olson Weekes – IBI Group Architects
Portland Public Schools – Franklin HS Modernization

21st Century Learning in an Historic Building
November 20, 2013



FRANKLIN HS – COMMUNITY DESIGN WORKSHOP

COMMUNITY FEEDBACK

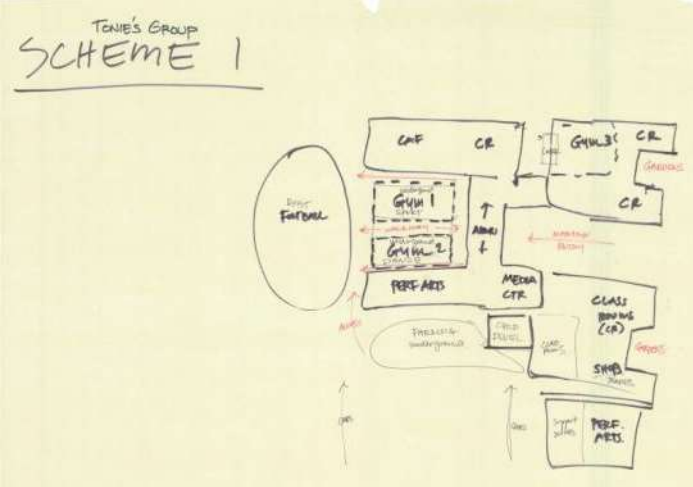
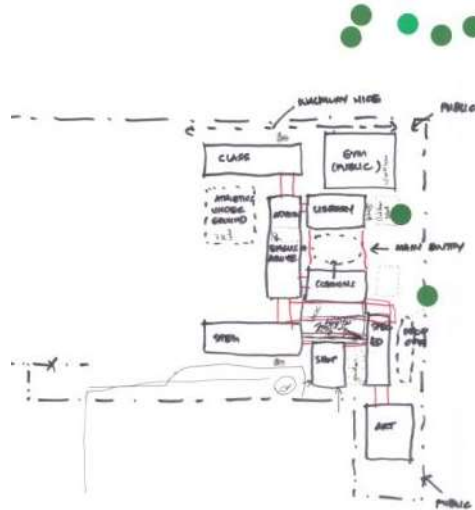
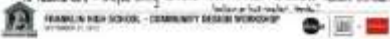
WHAT ARE THE KEY VALUES AND CHARACTERISTICS THAT ARE ESSENTIAL TO EMBED IN THE REIMAGINED FRANKLIN HS?
 Historic Building, New buildings should blend in and coordinate with symmetry

WHAT BUILDING OR SITE ELEMENTS ARE CULTURALLY SIGNIFICANT TO YOU?
 PLEASE MARK IN RED (OR ANOTHER COLOR) SIGNIFICANT TO YOUR ANSWERS

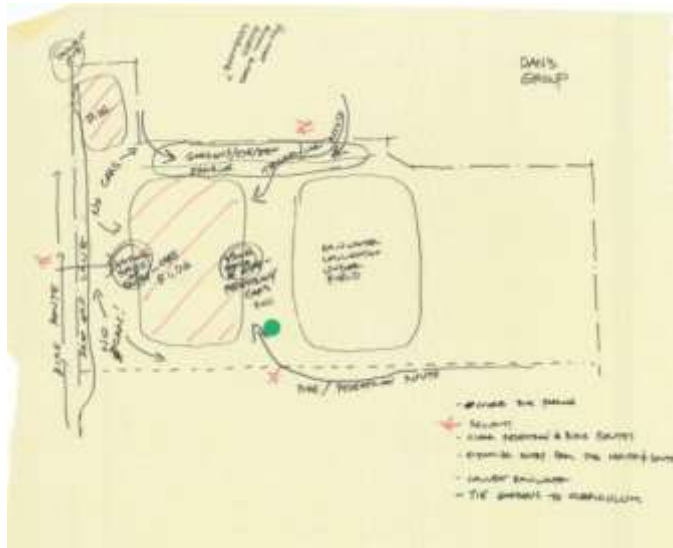
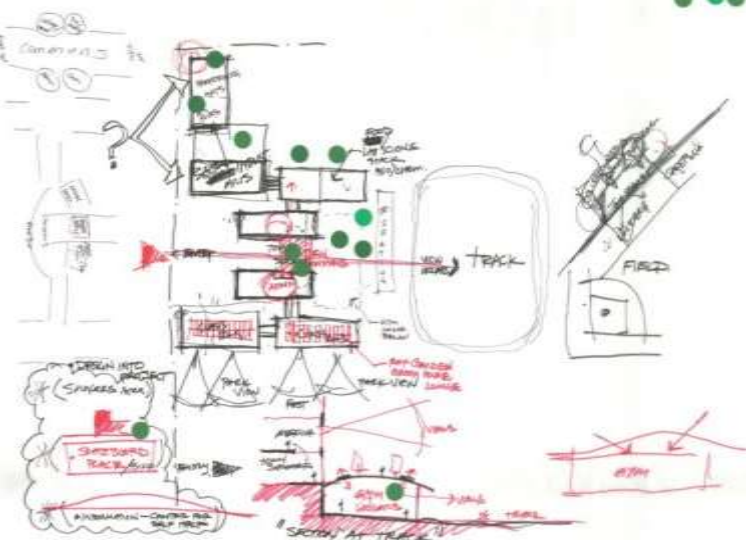
- North Lawn
- South Courtyard
- Lobby
- Star
- Open Auditorium
- Auditorium → To think old auditorium beauty, but it doesn't function
- Classrooms
- Synagogue
- Classrooms (1991)
- Boiler Room
- Shop Building → Not, but want it to be fully leased with no access other

FURTHER COMMENTS / IDEAS?

- We talked in our group but did not respond, underground parking (checking more parking, but not surface parking)
- LOVE the idea of collecting our abundant rainwater using it
- The HVAC system takes a lot of vertical room. Could use to build the radiators - water using alcohol water under windows leaves behind it



MARC'S GROUP



COMMUNITY FEEDBACK *Sat. Oct. 12*

WHAT ARE THE KEY VALUES AND CHARACTERISTICS THAT ARE ESSENTIAL TO EMBED IN THE REIMAGINED FRANKLIN HS?
 modernize, open, light learning spaces
 build up and open spaces

WHAT BUILDING OR SITE ELEMENTS ARE CULTURALLY SIGNIFICANT TO YOU?
 PLEASE MARK IN RED (OR ANOTHER COLOR) SIGNIFICANT TO YOUR ANSWERS

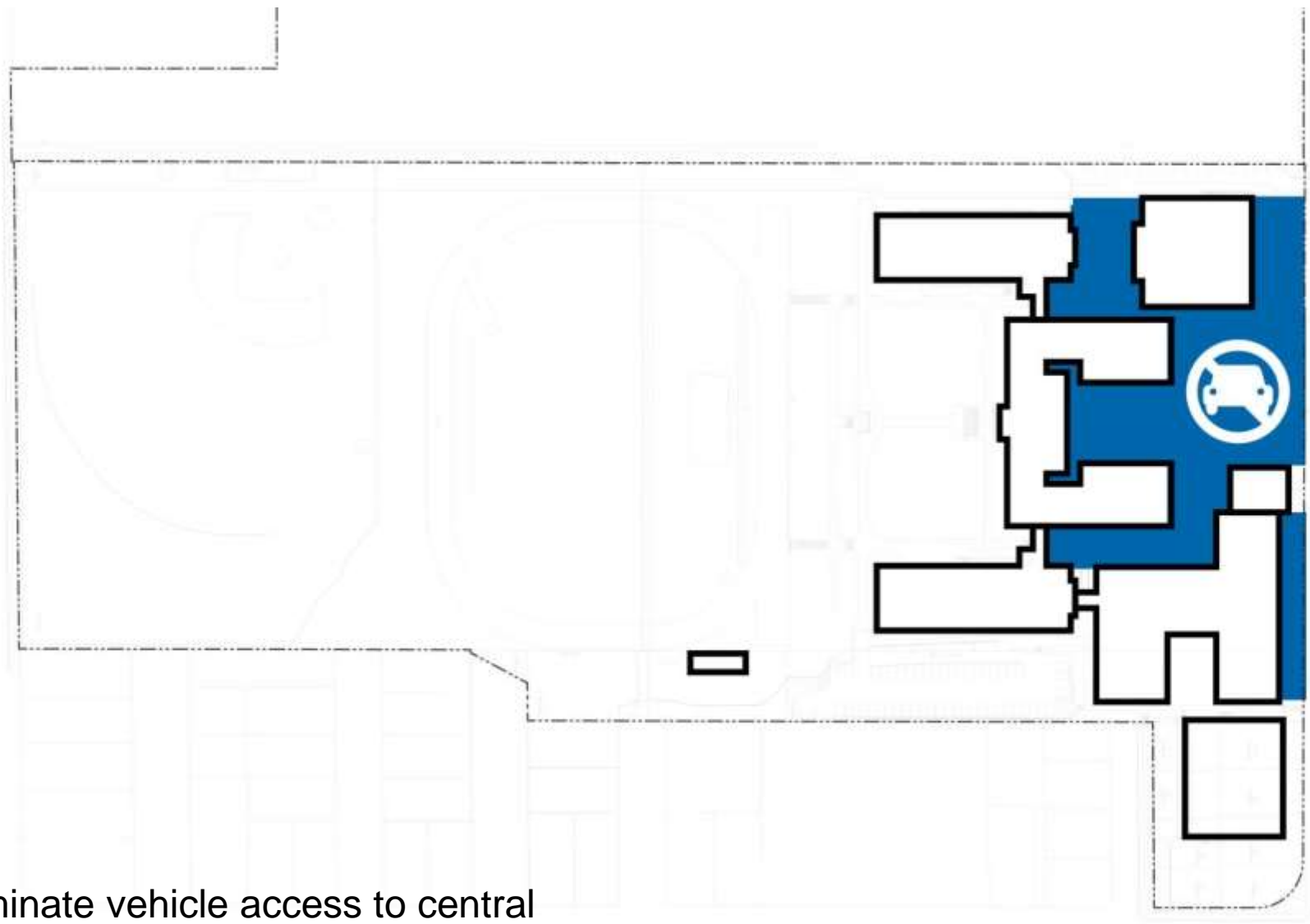
- North Lawn
- South Courtyard *improved upon, expanded*
- Lobby
- Star
- Open Sculpture
- Auditorium
- Galleries
- Fitness
- Synagogue
- Classrooms (1991)
- Boiler Room
- Shop Building
- Other

FURTHER COMMENTS / IDEAS?

- open community spaces
- bike lanes / more access
- think on 52nd - community focus
- modern eco-friendly responsive learning environment



FRANKLIN HS – COMMON THEMES



eliminate vehicle access to central campus

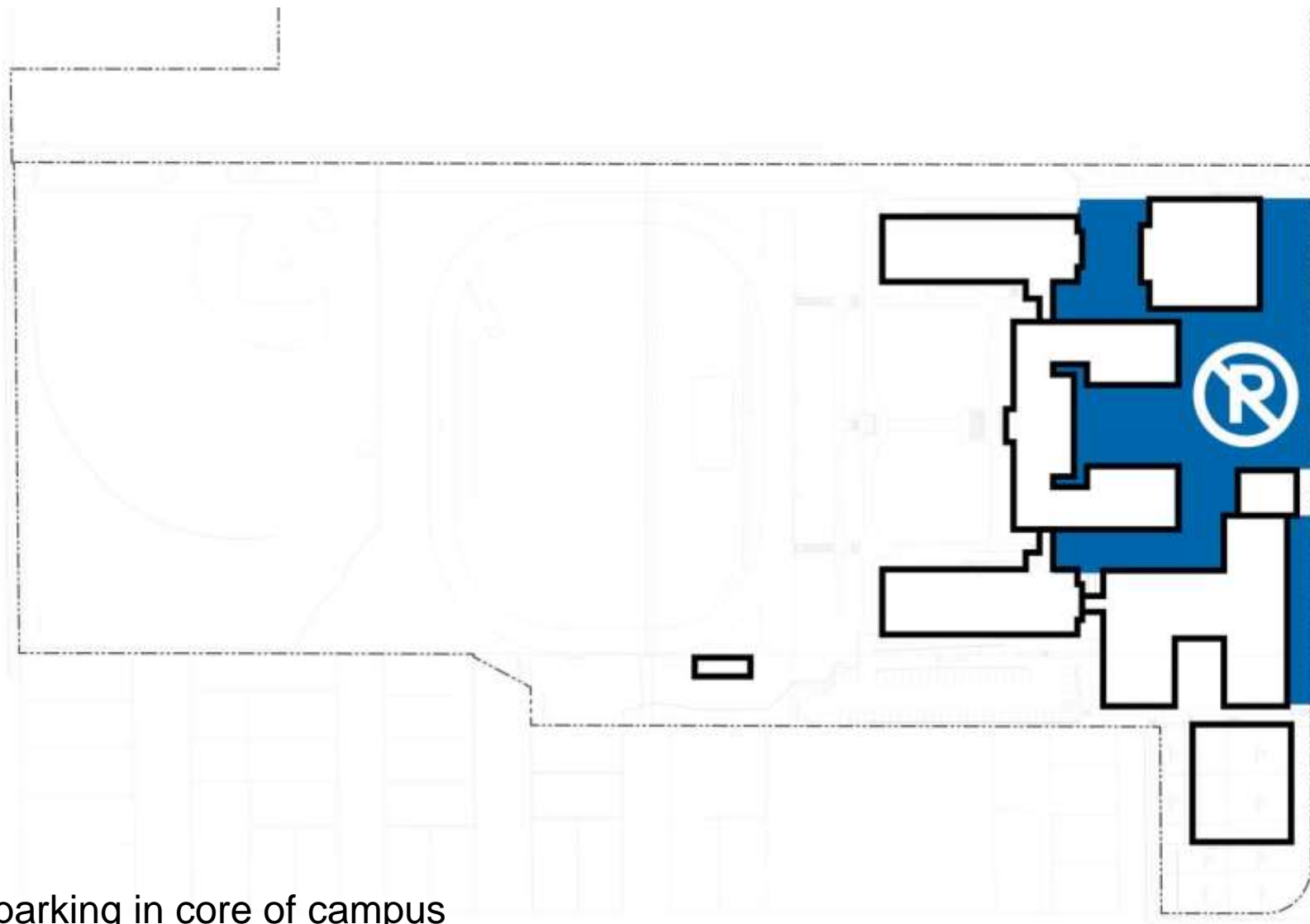


Dull Olson Weekes – IBI Group Architects
Portland Public Schools – Franklin HS Modernization

21st Century Learning in an Historic Building
November 20, 2013

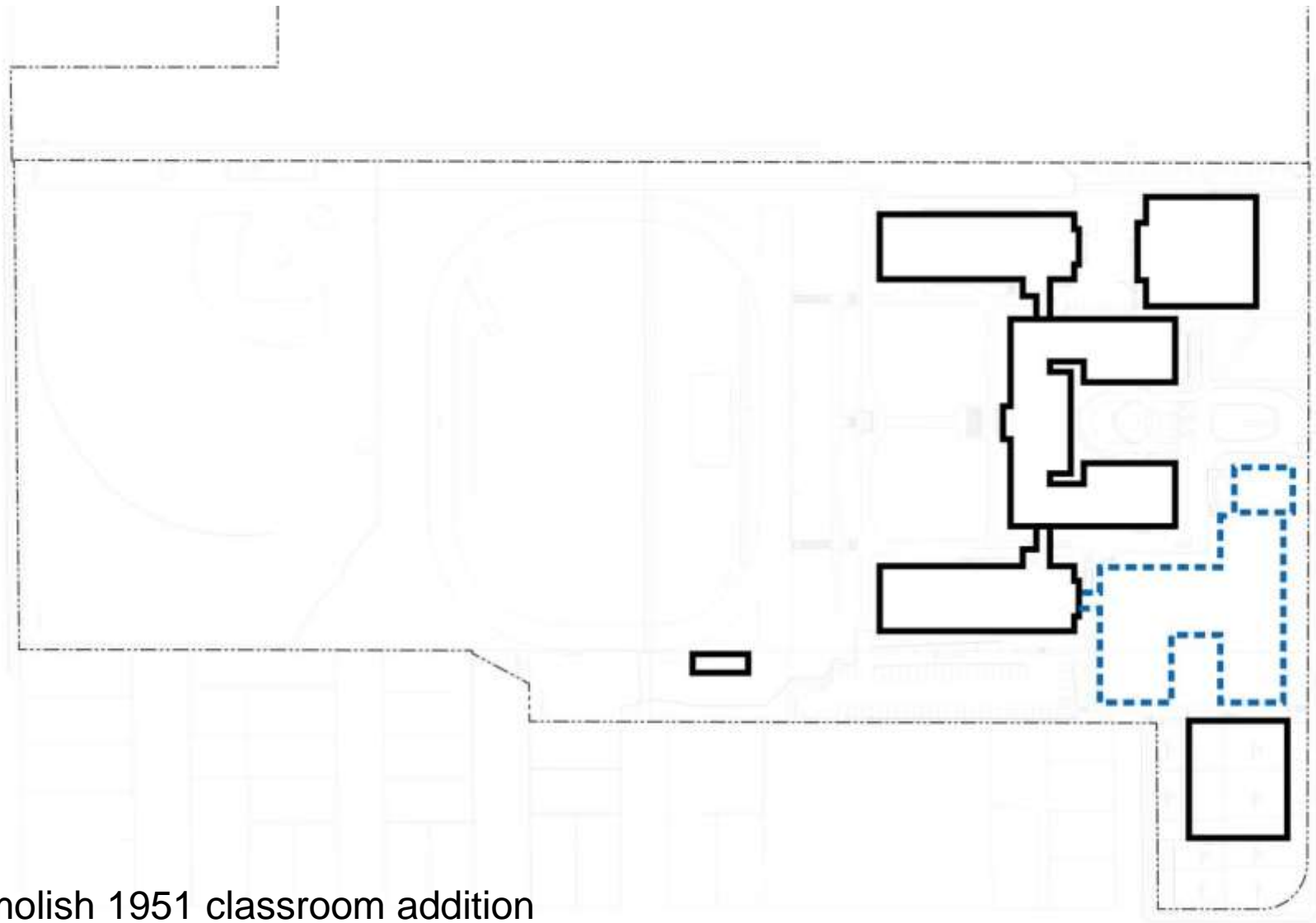


FRANKLIN HS – COMMON THEMES



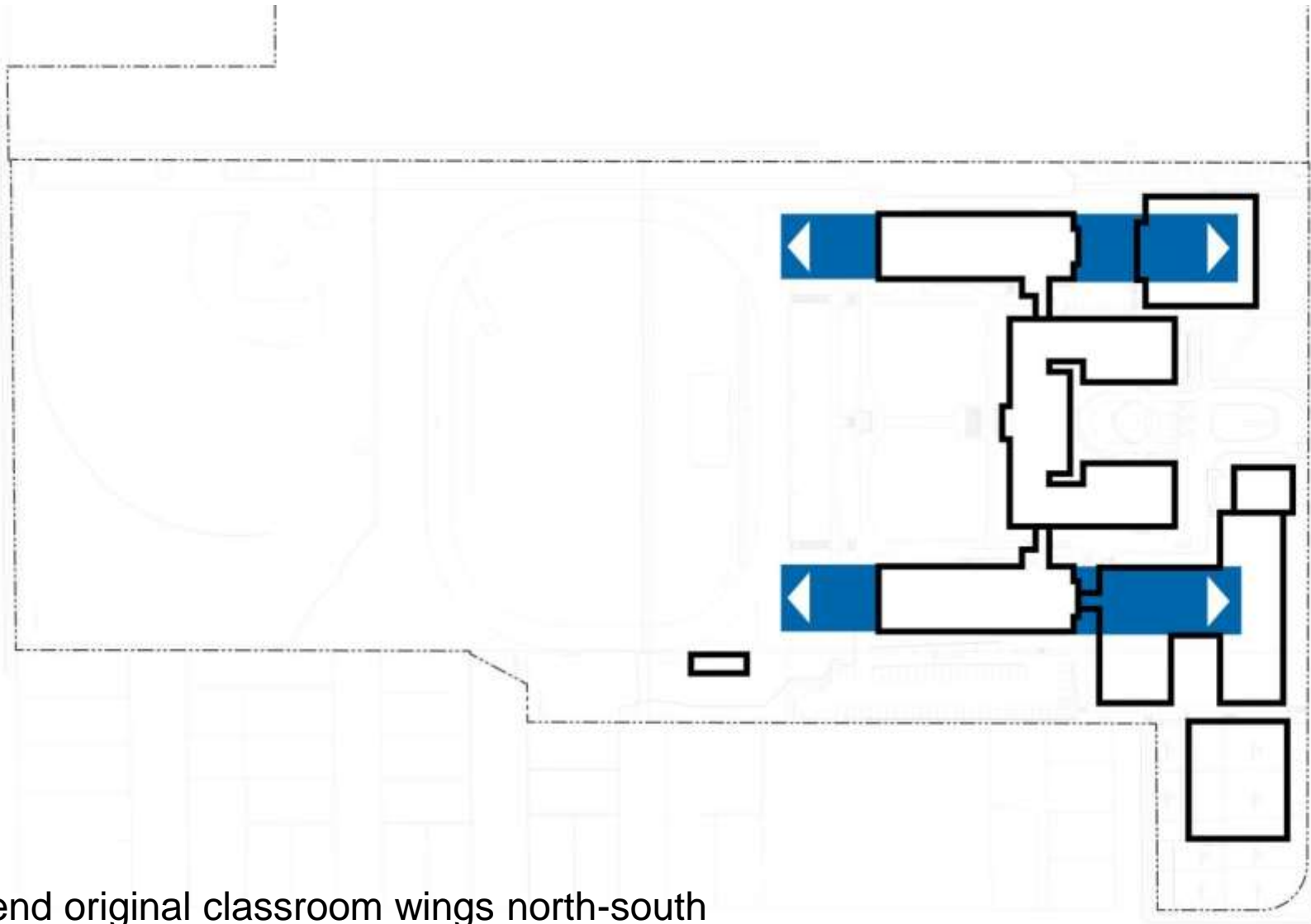
no parking in core of campus

FRANKLIN HS – COMMON THEMES



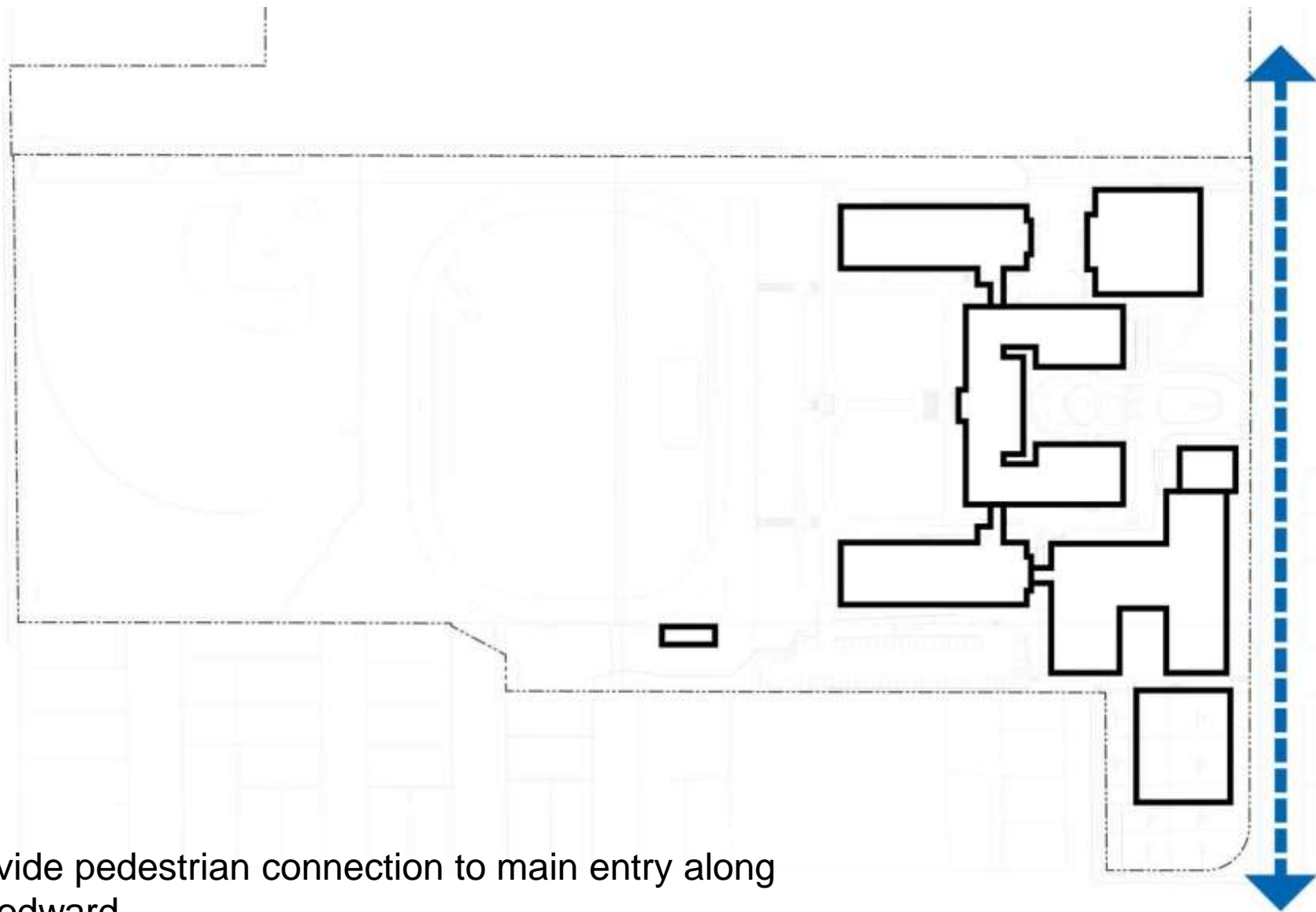
demolish 1951 classroom addition

FRANKLIN HS – COMMON THEMES



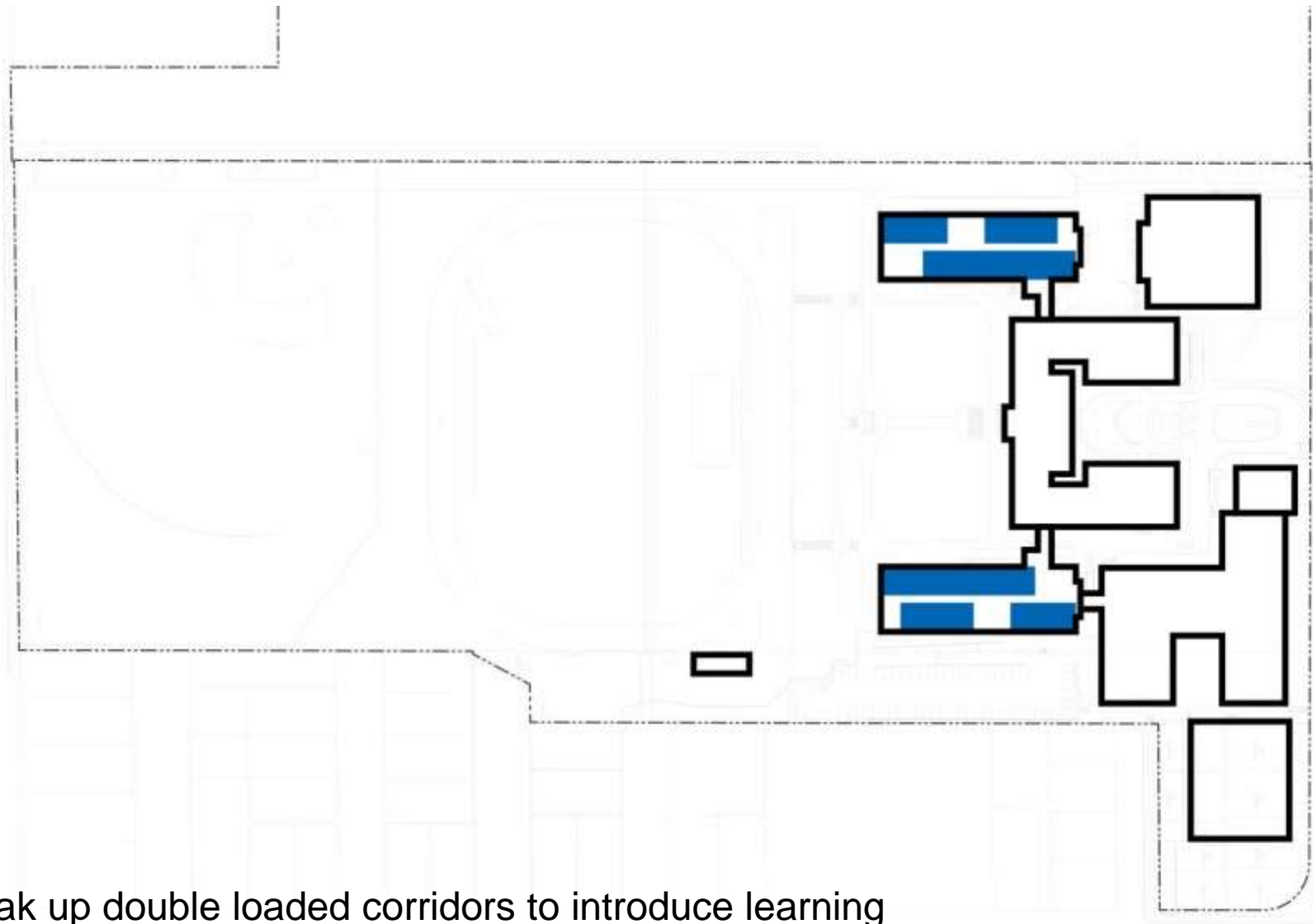
extend original classroom wings north-south

FRANKLIN HS – COMMON THEMES



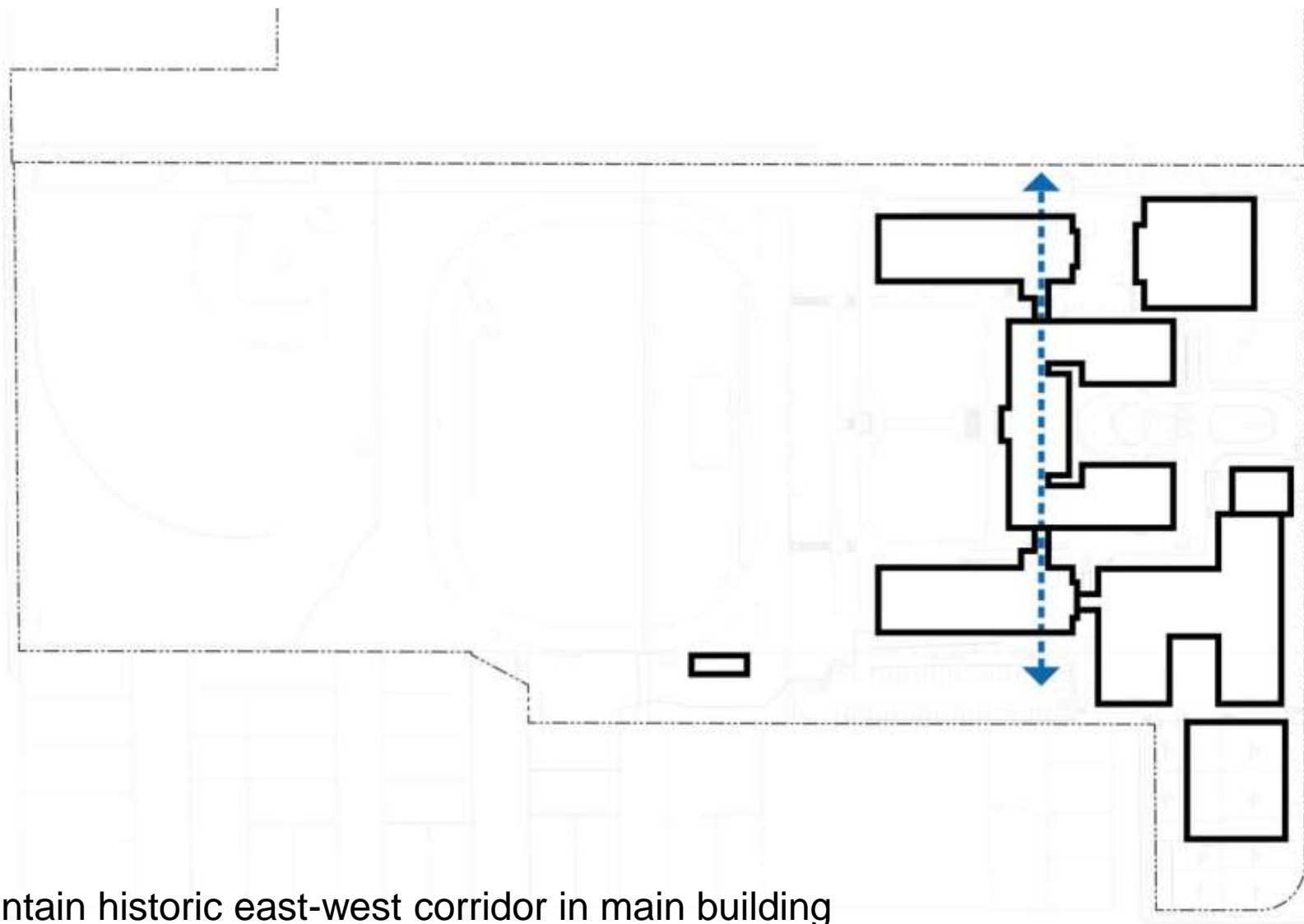
provide pedestrian connection to main entry along Woodward

FRANKLIN HS – COMMON THEMES



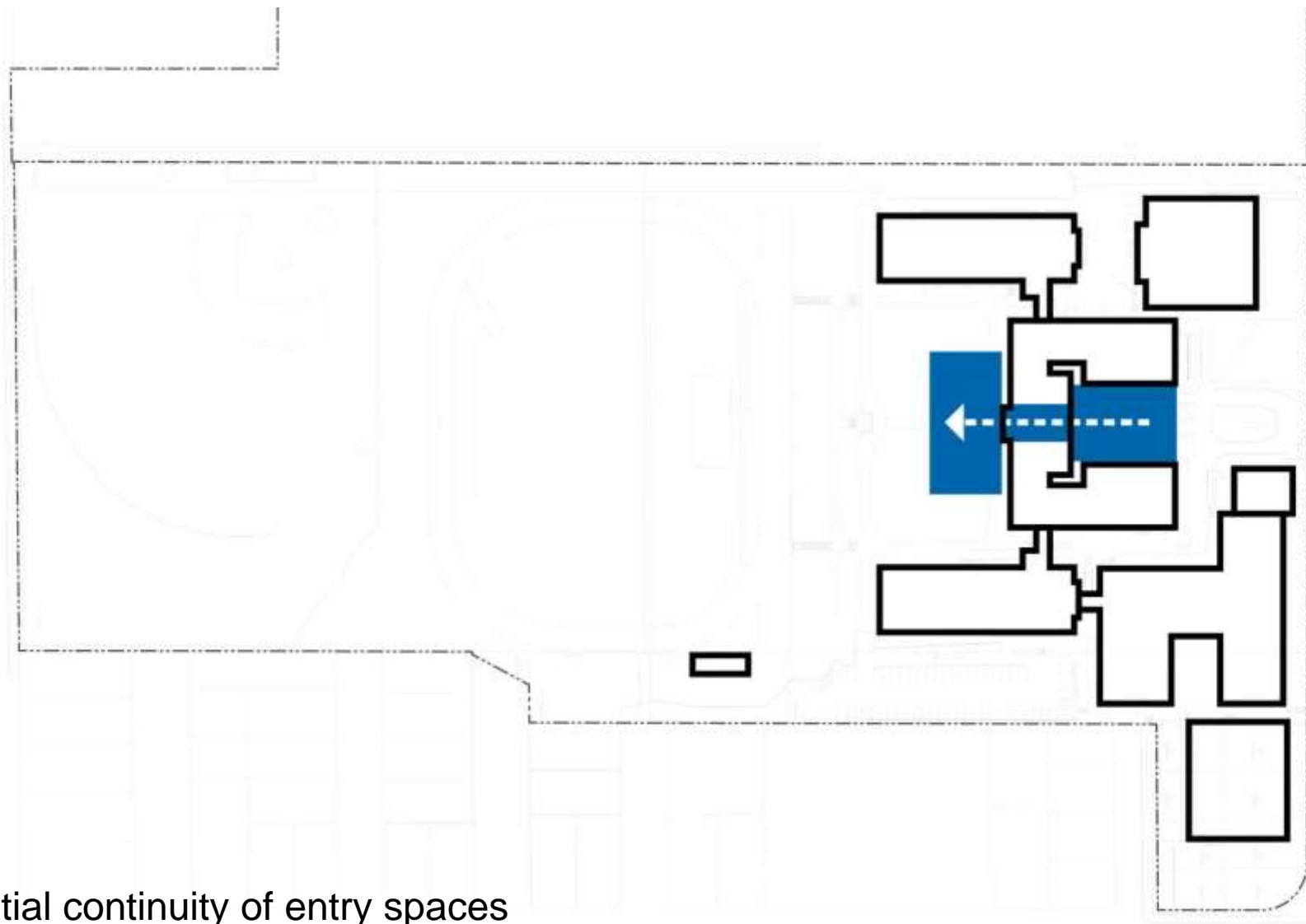
break up double loaded corridors to introduce learning commons

FRANKLIN HS – COMMON THEMES



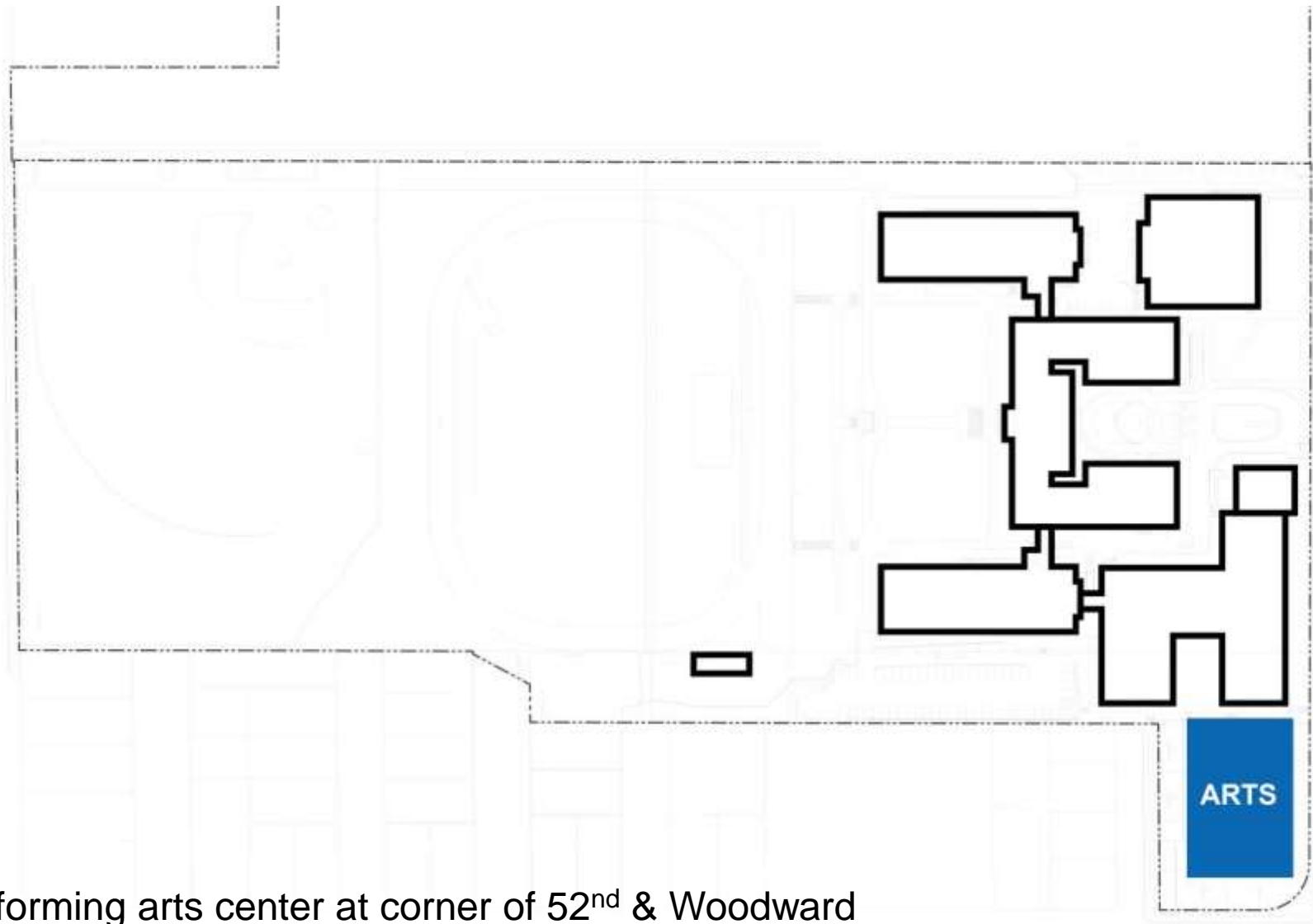
maintain historic east-west corridor in main building

FRANKLIN HS – COMMON THEMES



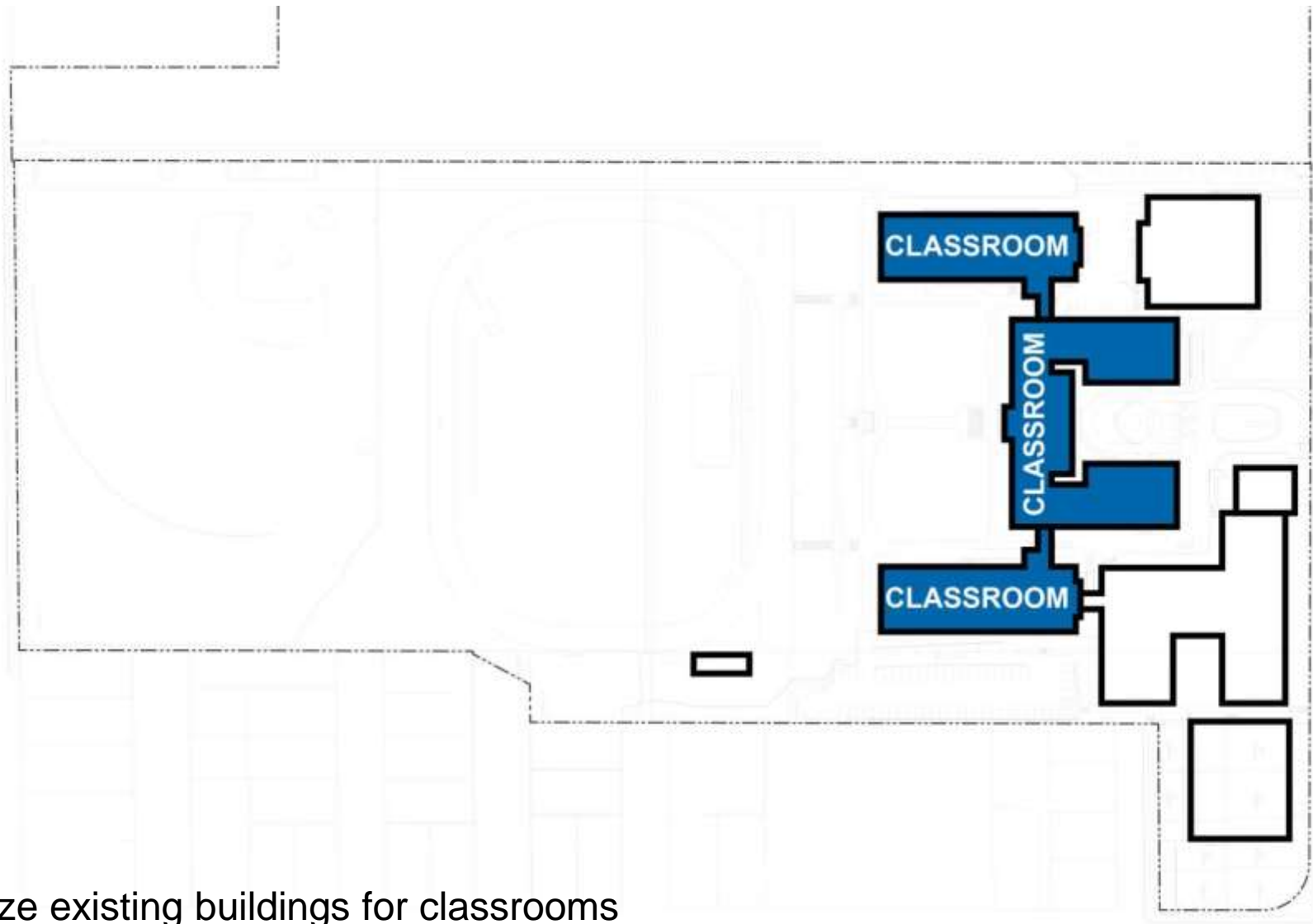
spatial continuity of entry spaces

FRANKLIN HS – COMMON THEMES



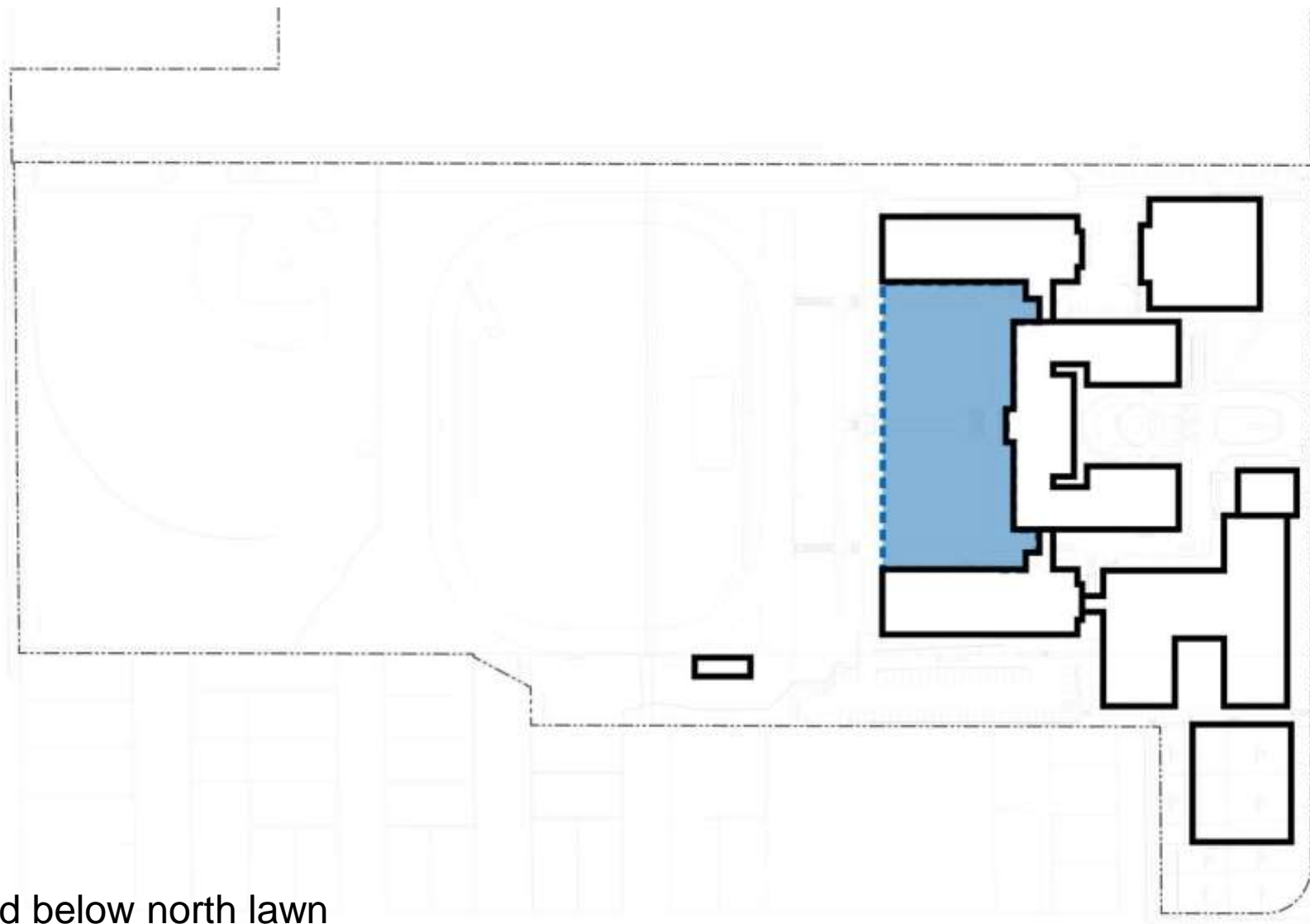
performing arts center at corner of 52nd & Woodward

FRANKLIN HS – COMMON THEMES



utilize existing buildings for classrooms

FRANKLIN HS – COMMON THEMES



build below north lawn

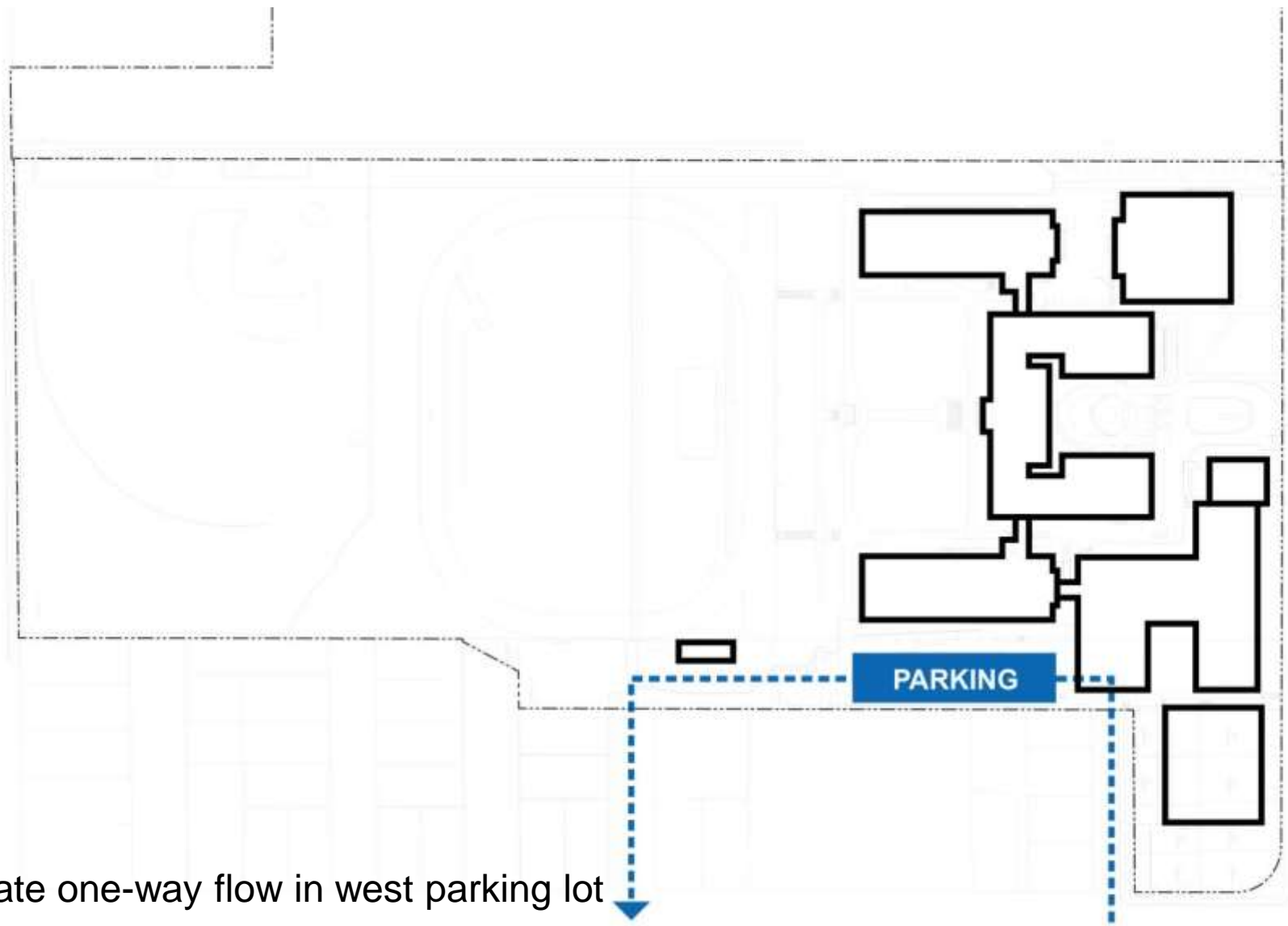


Dull Olson Weekes – IBI Group Architects
Portland Public Schools – Franklin HS Modernization

21st Century Learning in an Historic Building
November 20, 2013

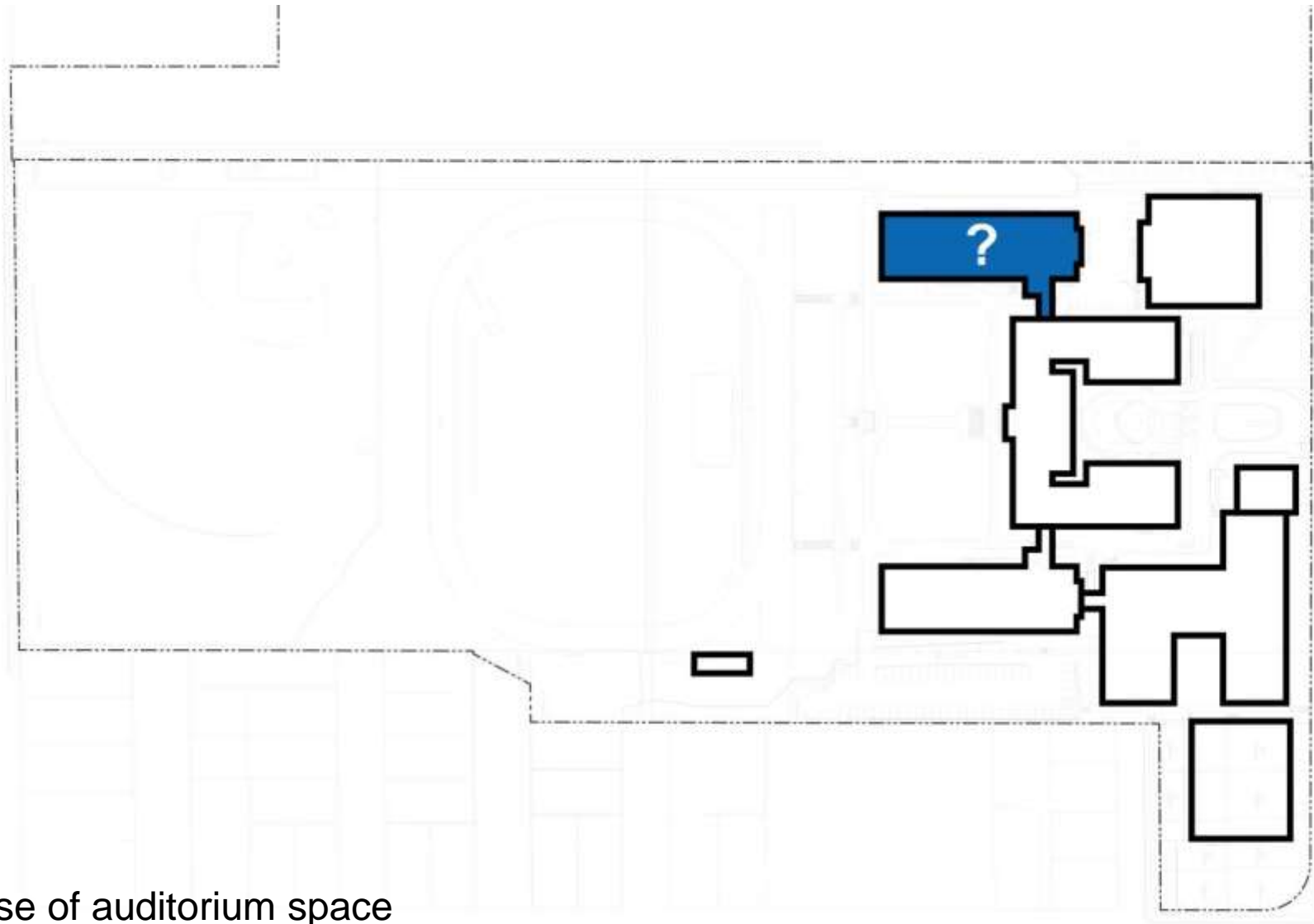


FRANKLIN HS – COMMON THEMES



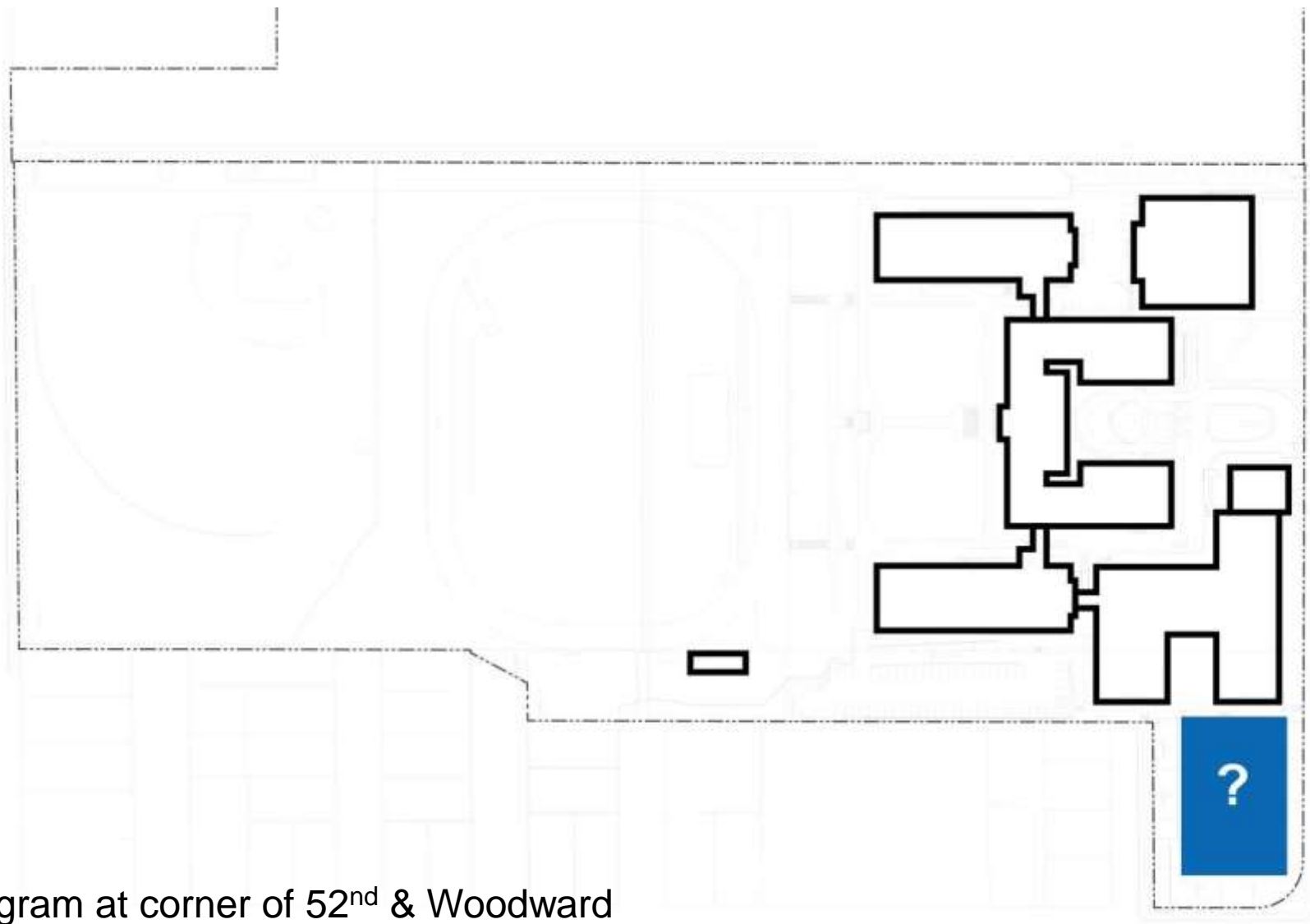
create one-way flow in west parking lot

FRANKLIN HS – UNIQUE IDEAS



reuse of auditorium space

FRANKLIN HS – UNIQUE IDEAS



program at corner of 52nd & Woodward

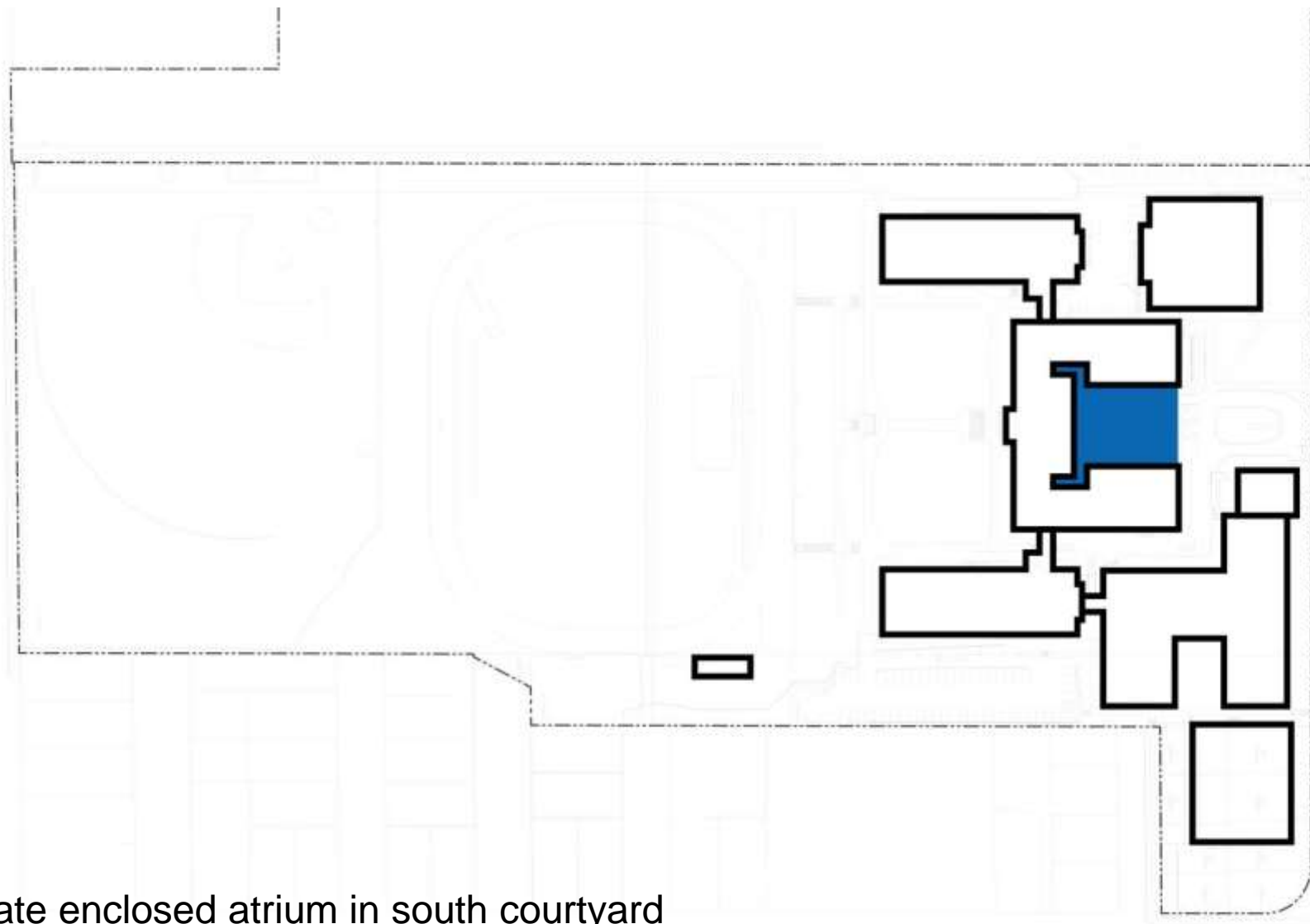


Dull Olson Weekes – IBI Group Architects
Portland Public Schools – Franklin HS Modernization

21st Century Learning in an Historic Building
November 20, 2013



FRANKLIN HS – UNIQUE IDEAS



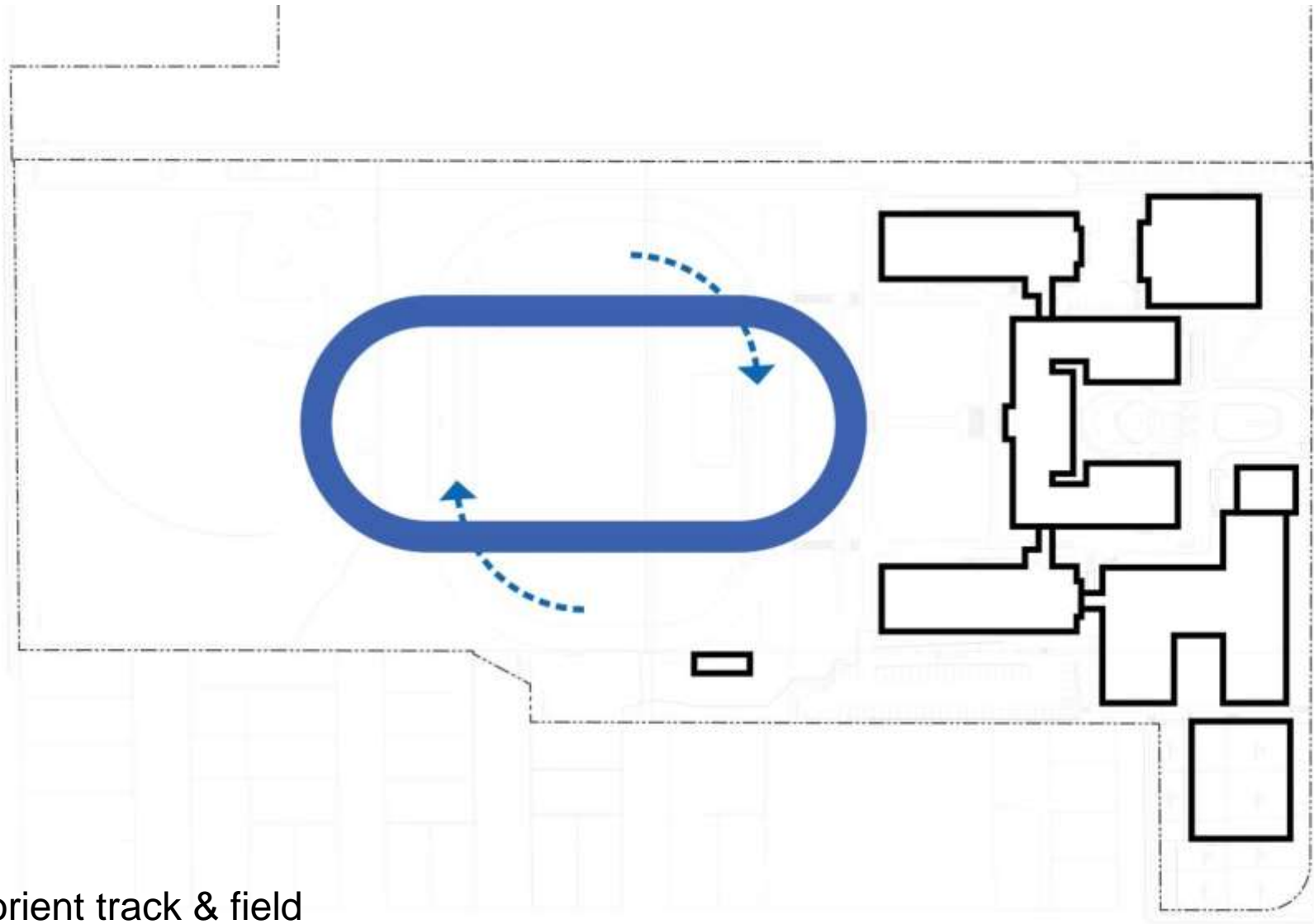
create enclosed atrium in south courtyard



Dull Olson Weekes – IBI Group Architects
Portland Public Schools – Franklin HS Modernization

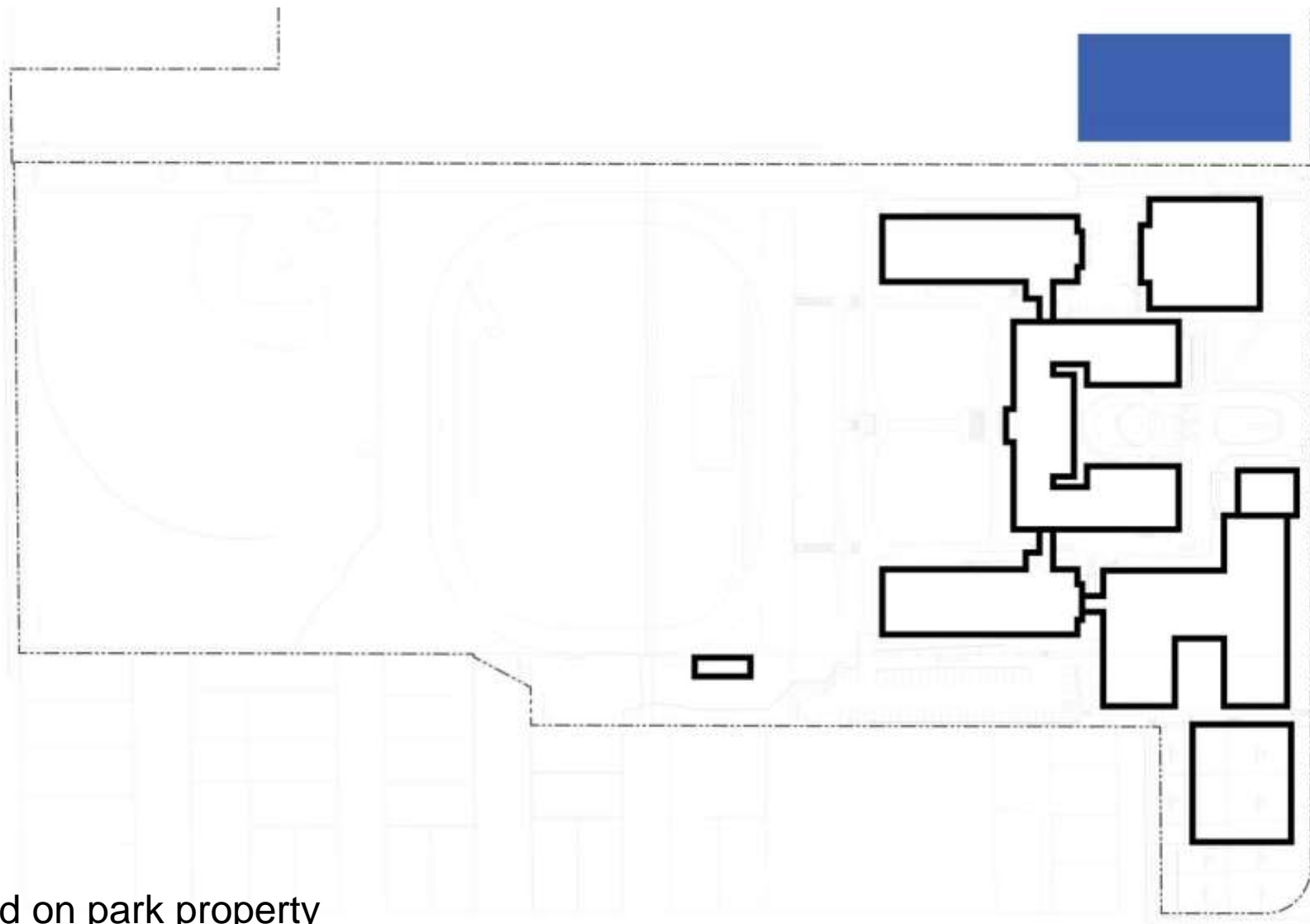
21st Century Learning in an Historic Building
November 20, 2013





re-orient track & field

FRANKLIN HS – UNIQUE IDEAS



build on park property

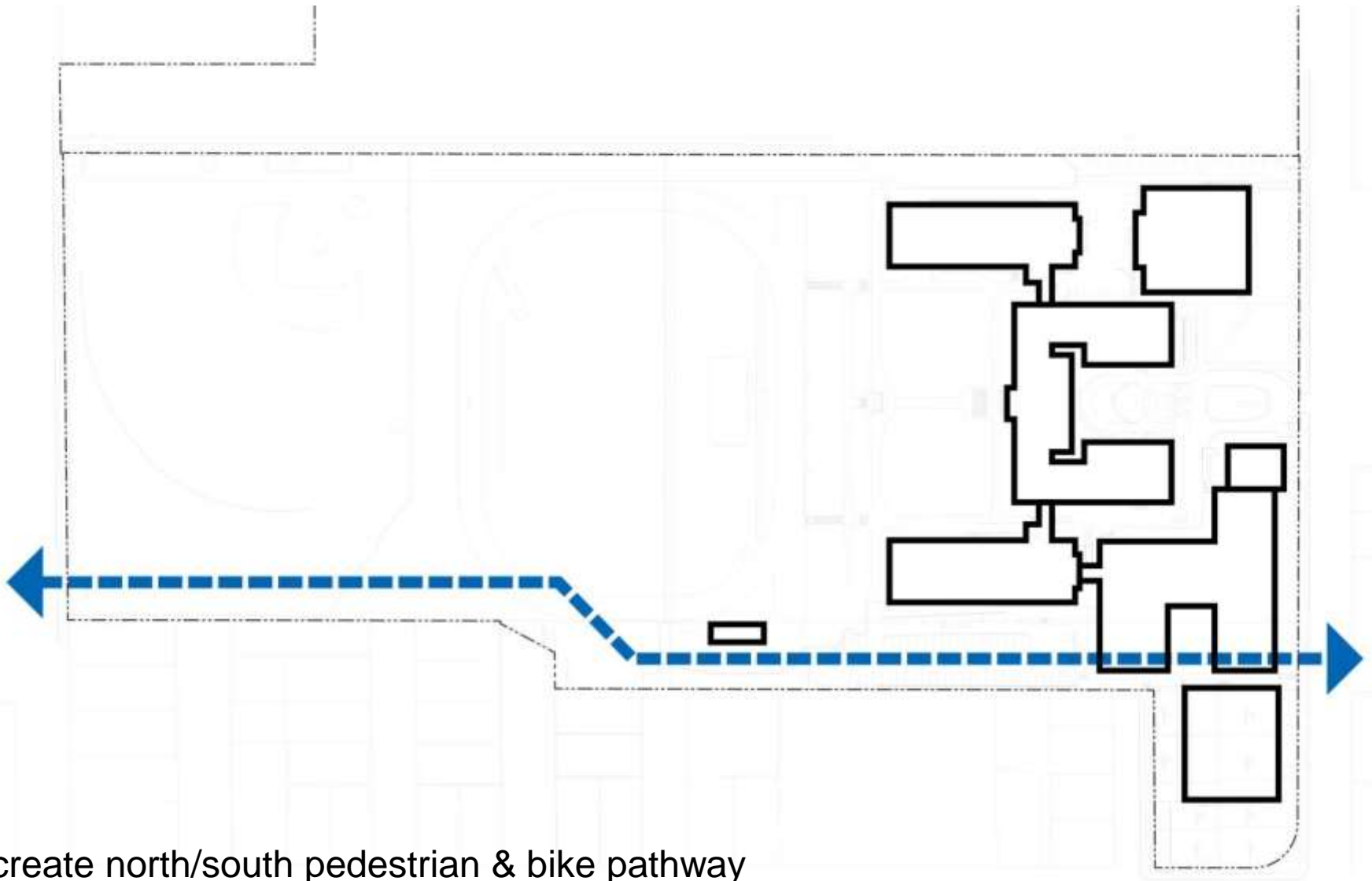


Dull Olson Weekes – IBI Group Architects
Portland Public Schools – Franklin HS Modernization

21st Century Learning in an Historic Building
November 20, 2013

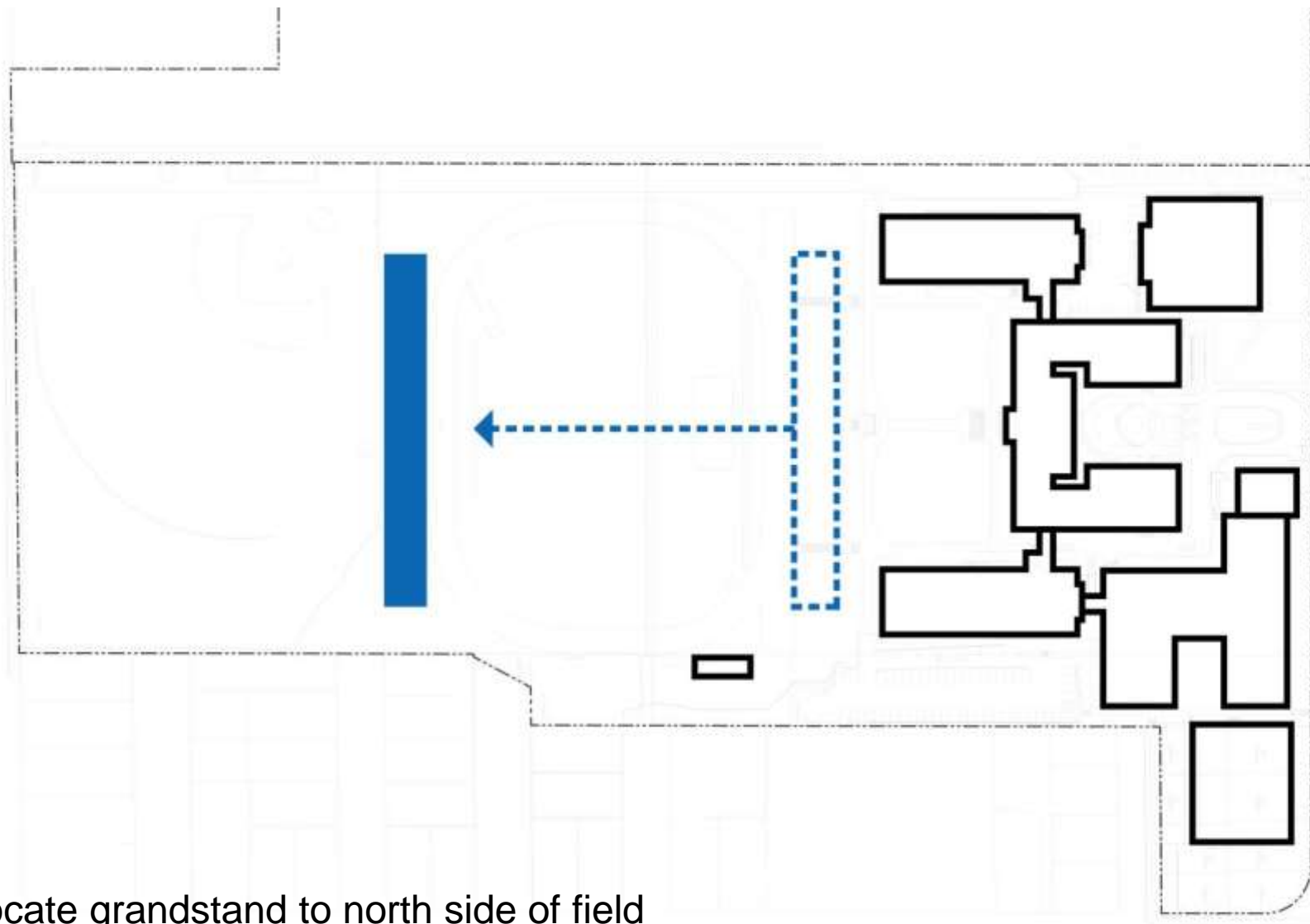


FRANKLIN HS – UNIQUE IDEAS



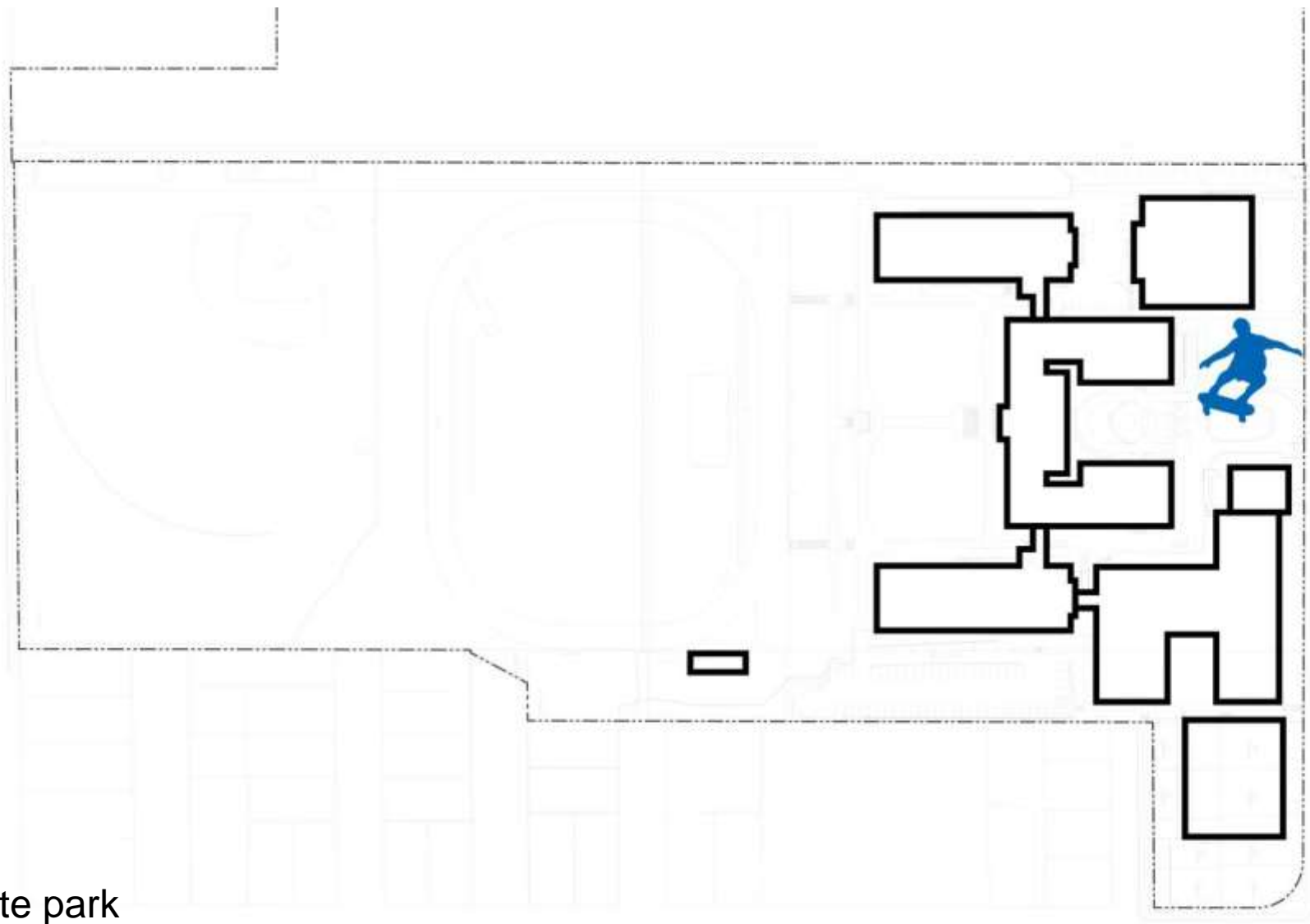
create north/south pedestrian & bike pathway

FRANKLIN HS – UNIQUE IDEAS



relocate grandstand to north side of field

FRANKLIN HS – UNIQUE IDEAS



skate park

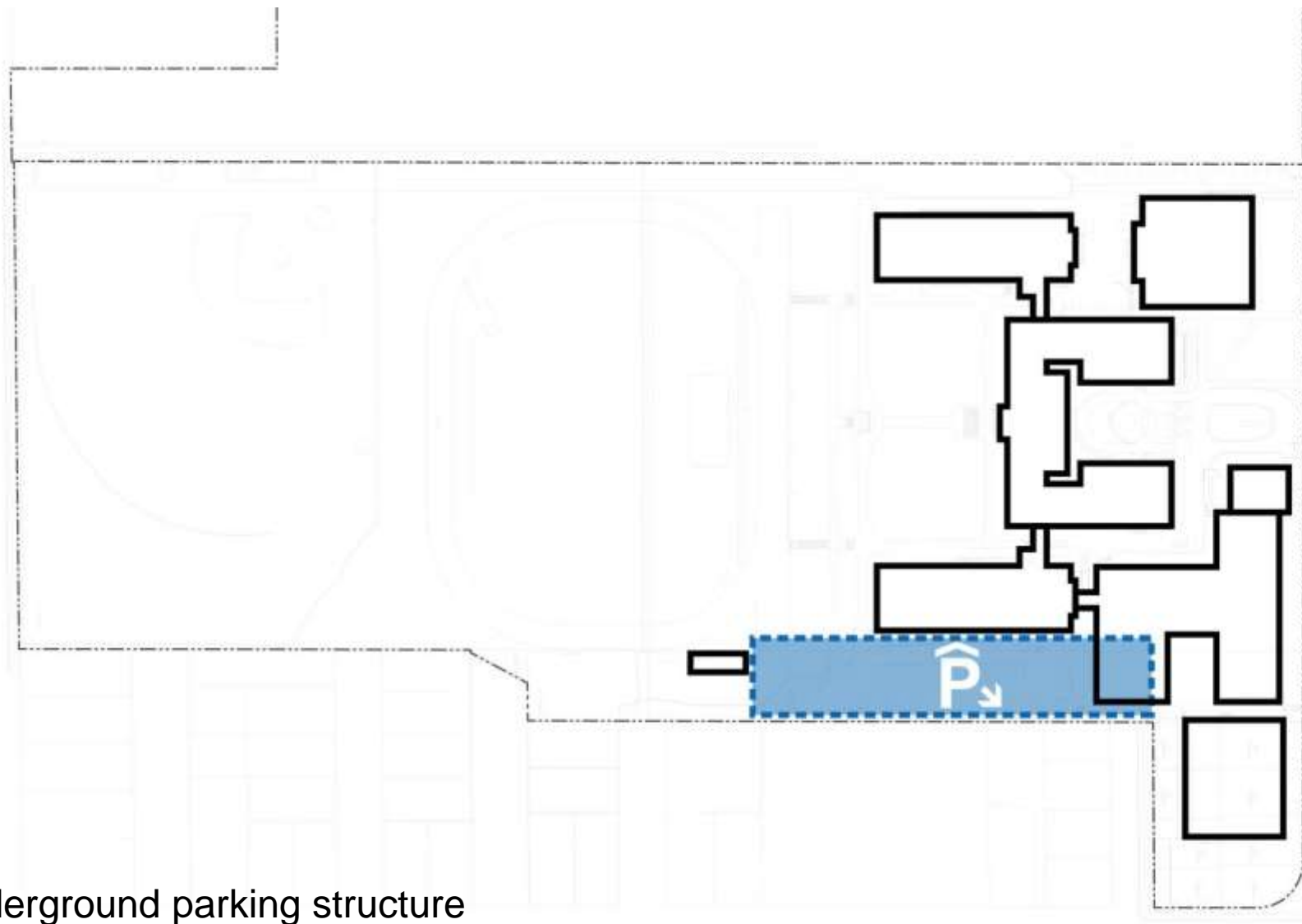


Dull Olson Weekes – IBI Group Architects
Portland Public Schools – Franklin HS Modernization

21st Century Learning in an Historic Building
November 20, 2013

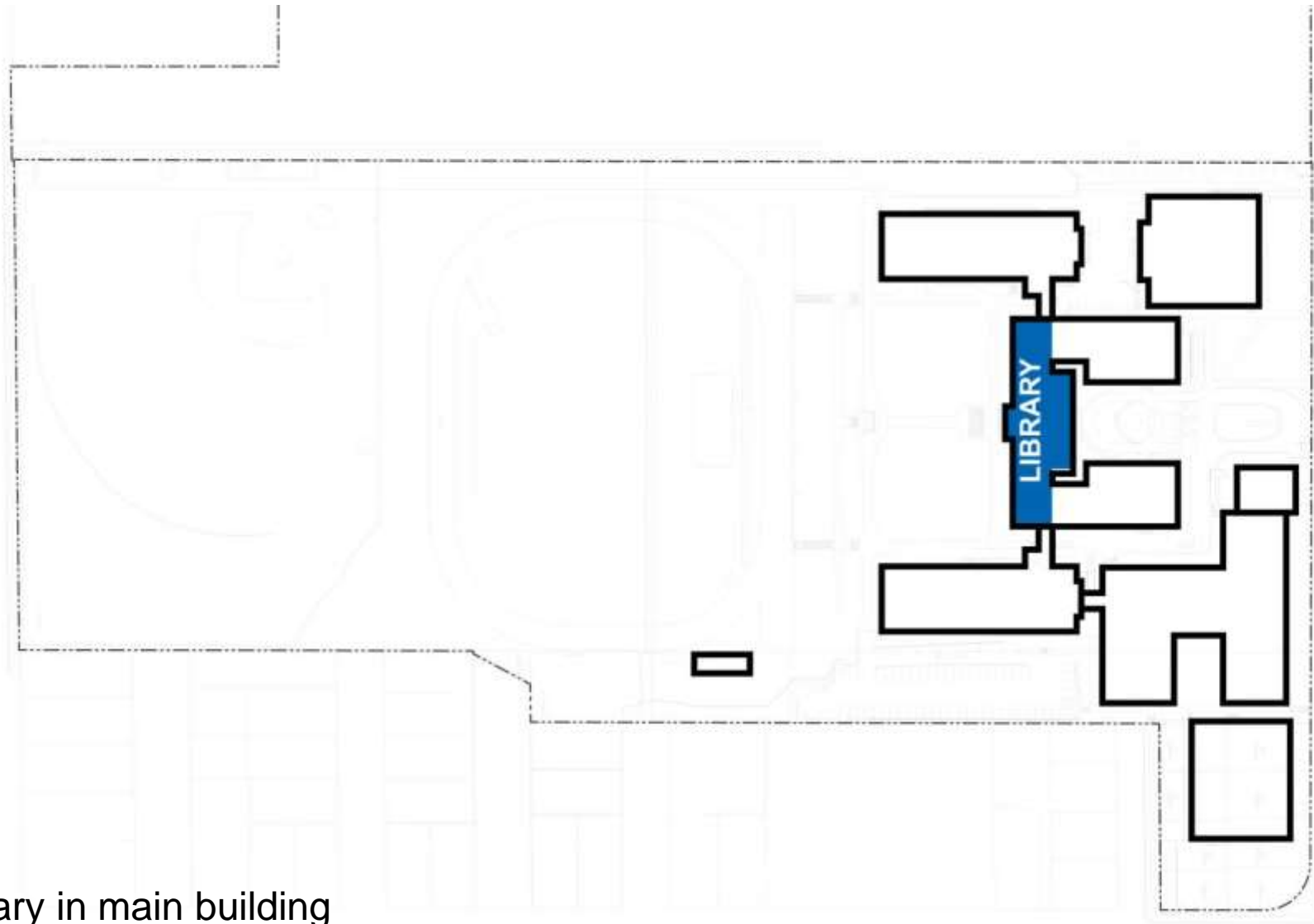


FRANKLIN HS – UNIQUE IDEAS



underground parking structure

FRANKLIN HS – UNIQUE IDEAS



library in main building



Dull Olson Weekes – IBI Group Architects
Portland Public Schools – Franklin HS Modernization

21st Century Learning in an Historic Building
November 20, 2013



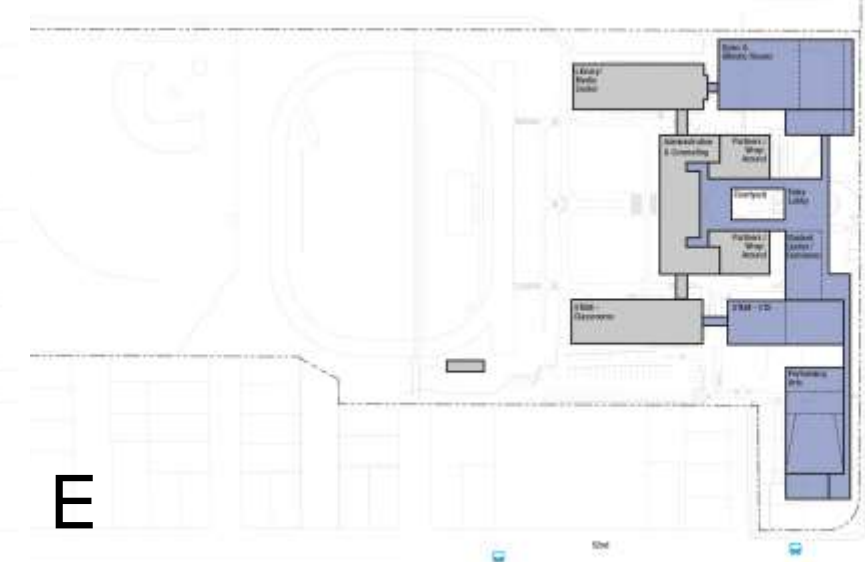
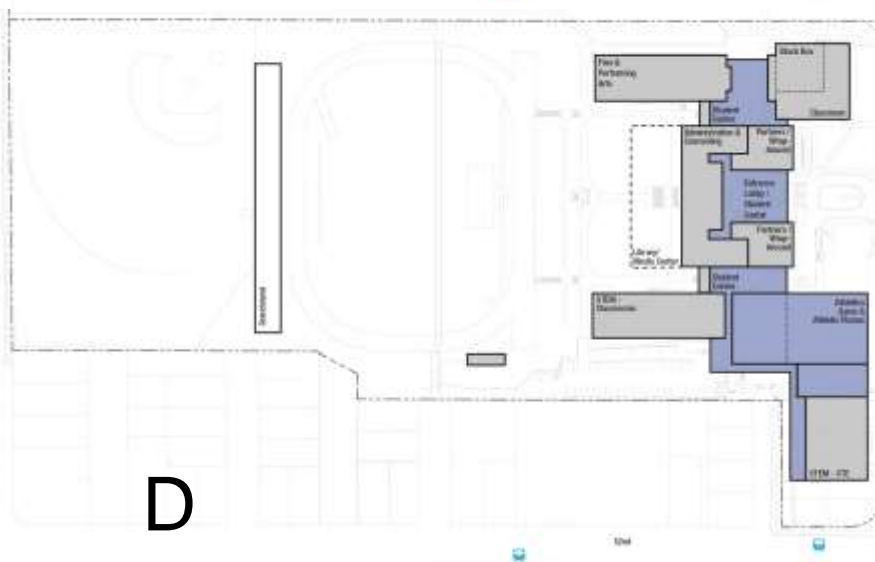
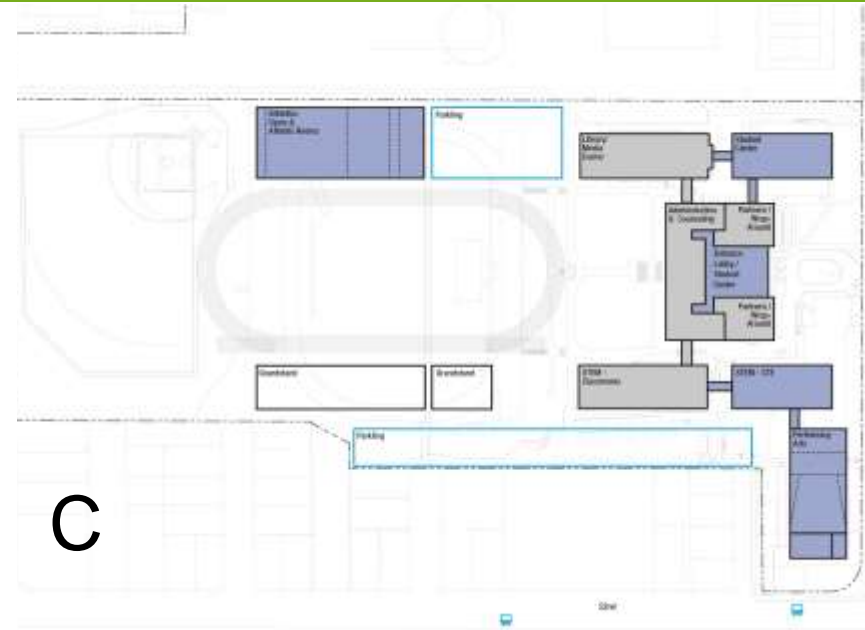
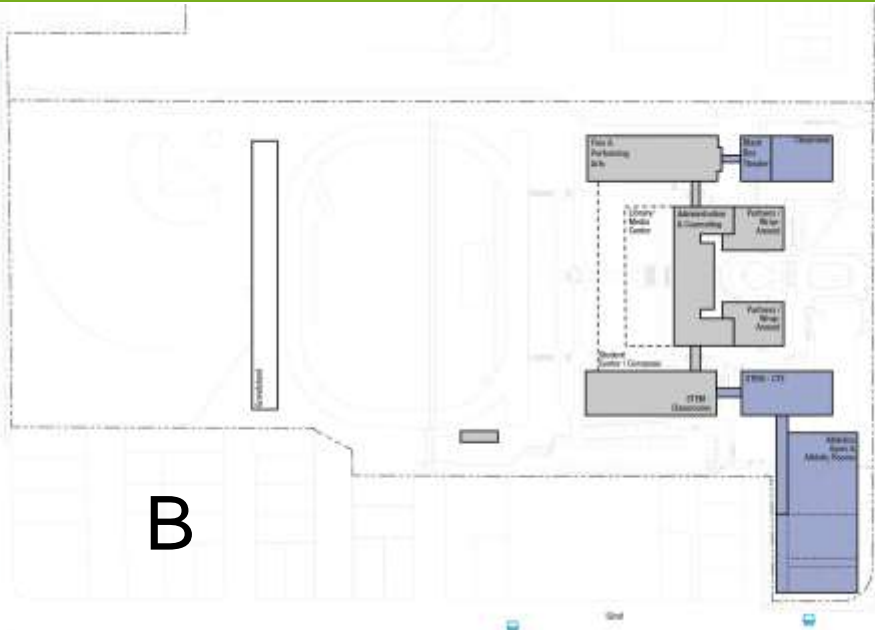
FRANKLIN HS – MASTER PLAN OPTIONS

B

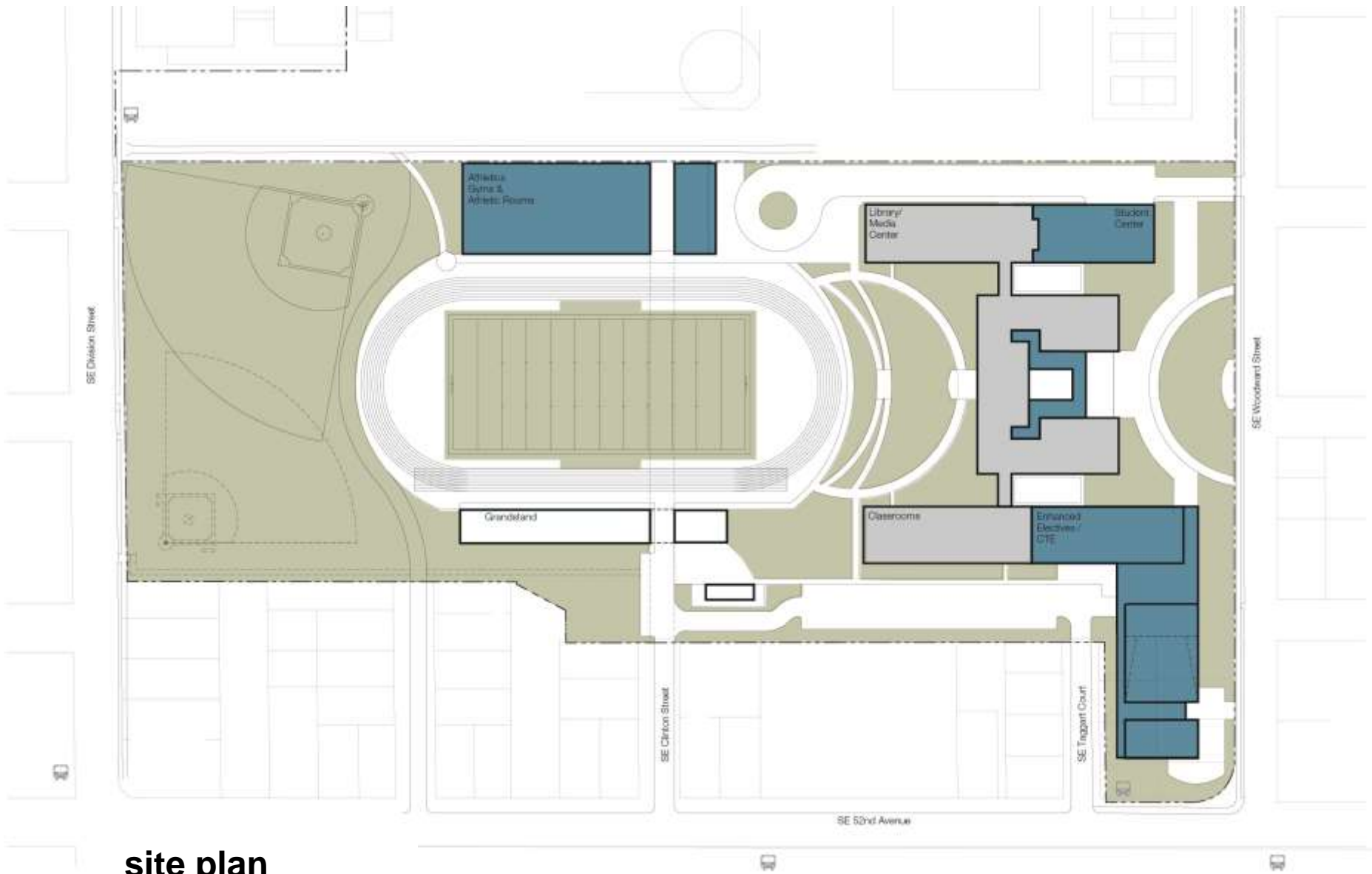
C

D

E



FRANKLIN HS – PREFERRED MASTER PLAN OPTION C



site plan

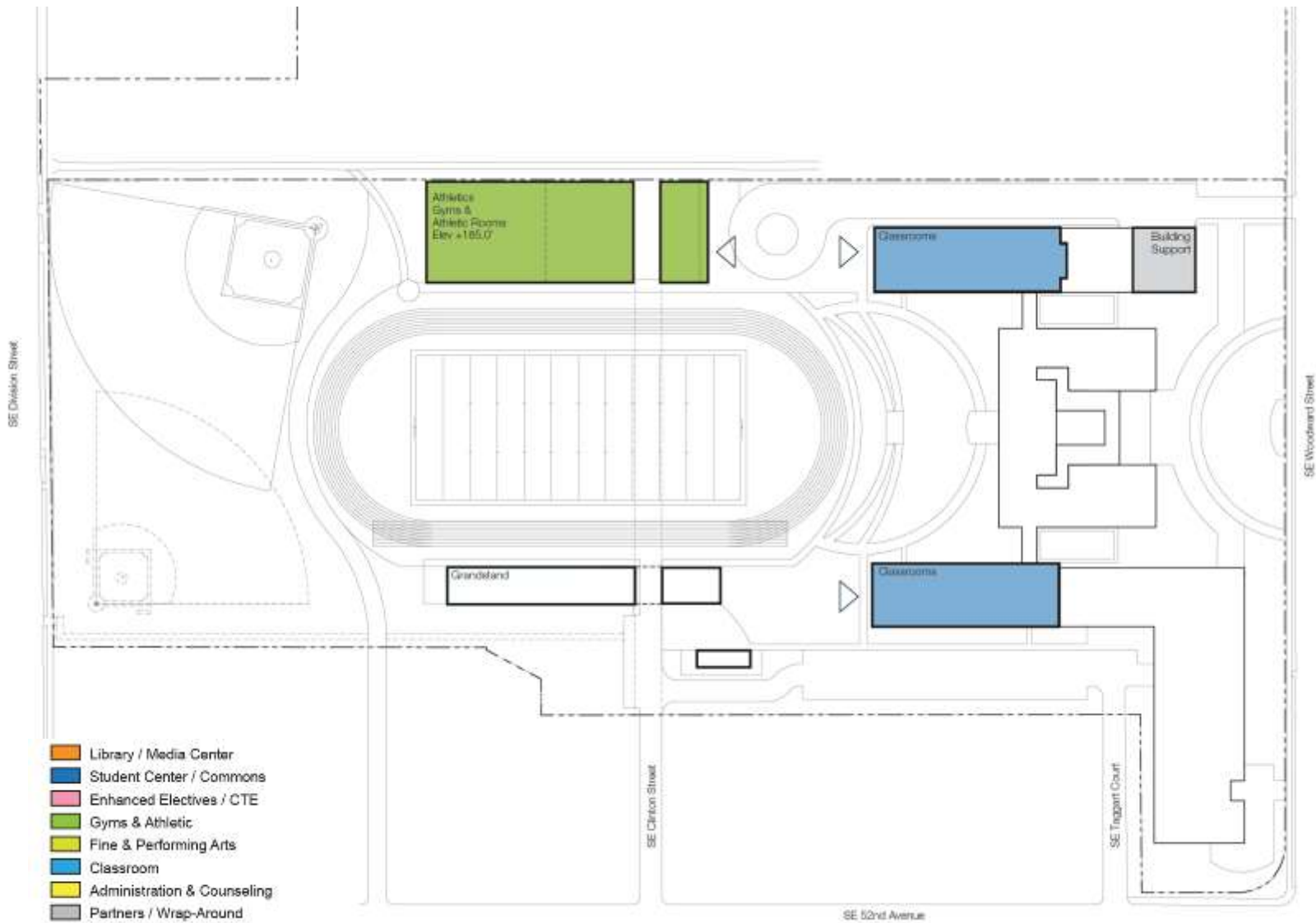


Dull Olson Weekes – IBI Group Architects
Portland Public Schools – Franklin HS Modernization

21st Century Learning in an Historic Building
November 20, 2013

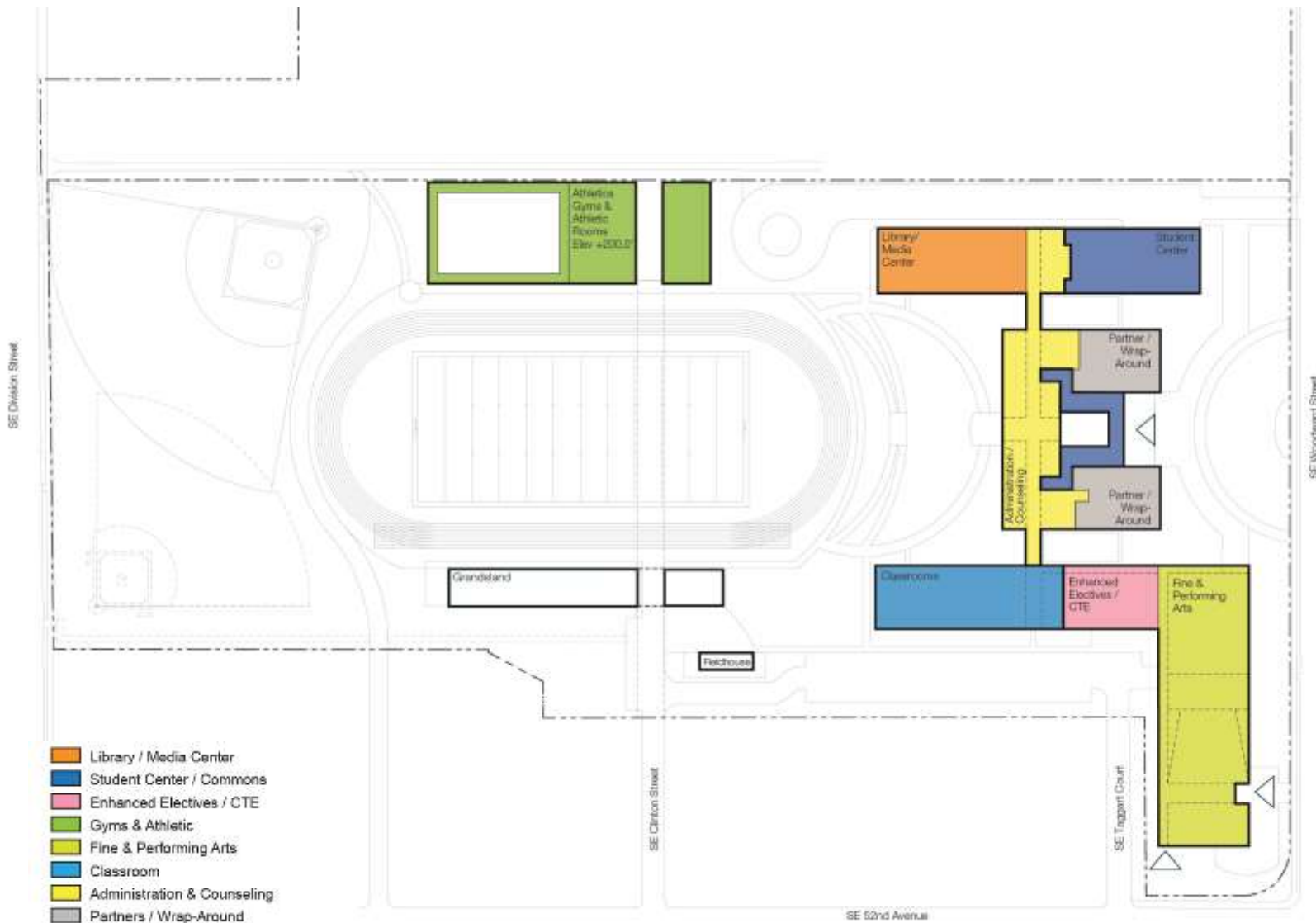


FRANKLIN HS – PREFERRED MASTER PLAN OPTION C



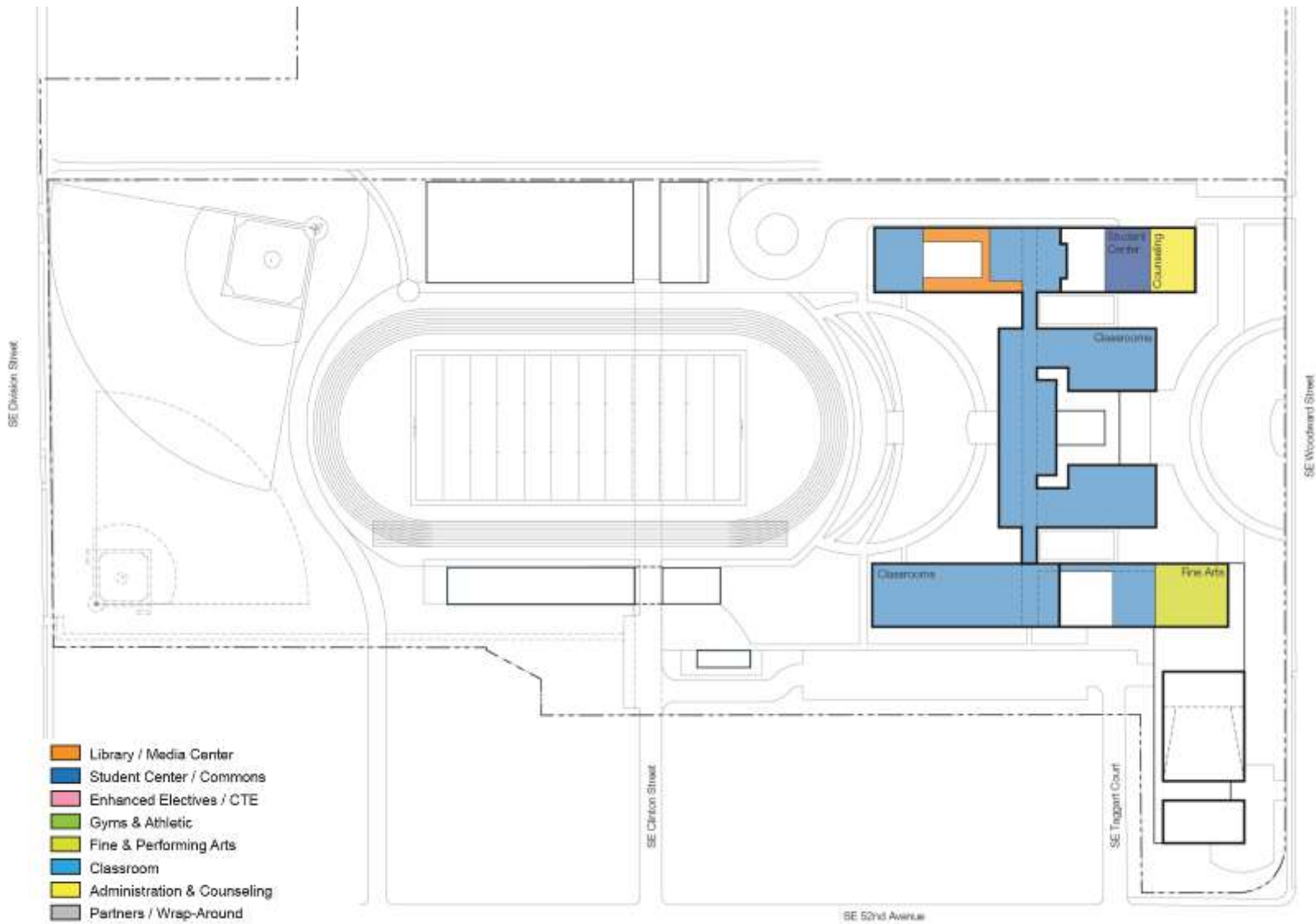
basement plan

FRANKLIN HS – PREFERRED MASTER PLAN OPTION C



first floor plan

FRANKLIN HS – PREFERRED MASTER PLAN OPTION C



second floor plan

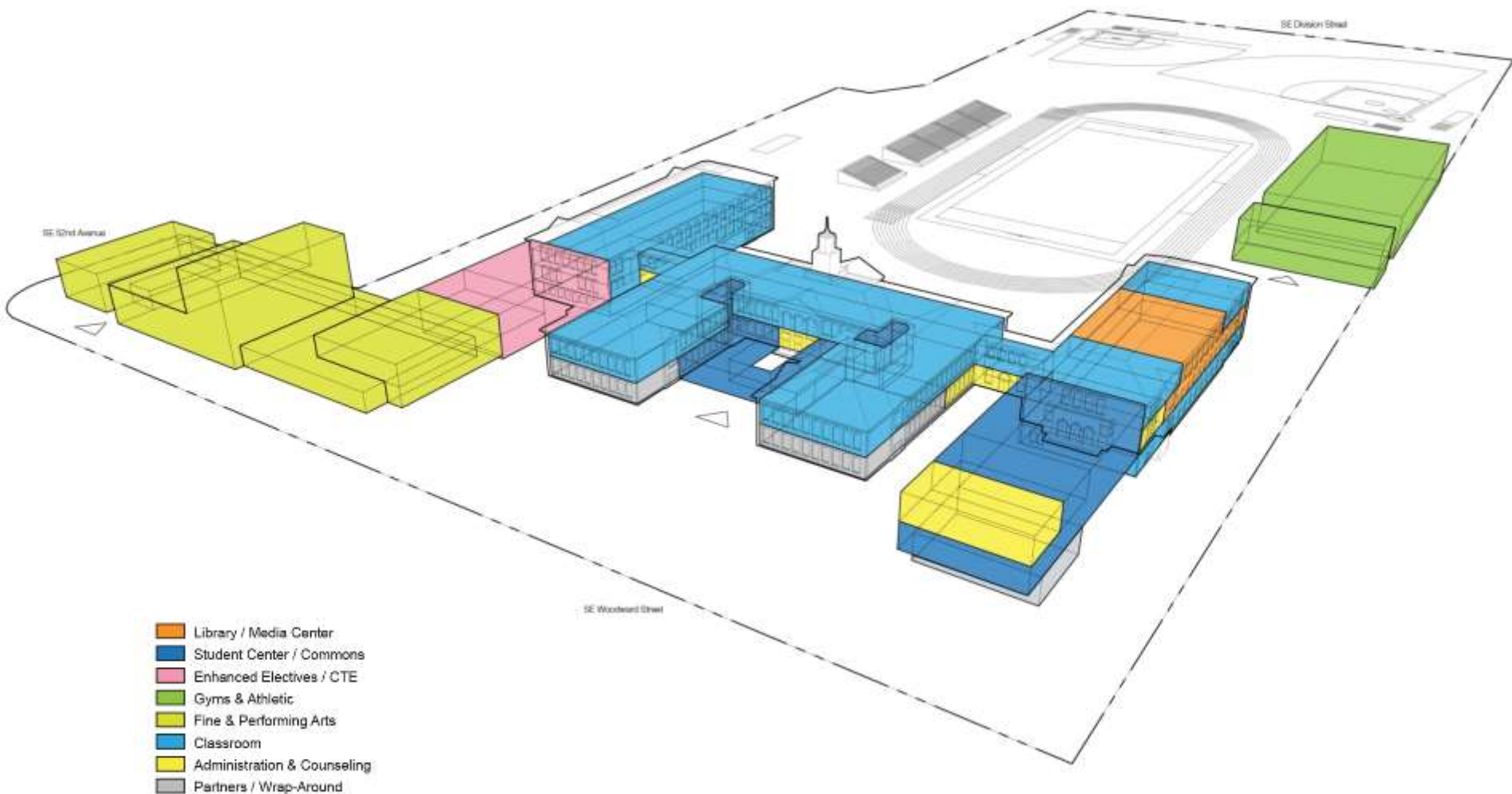


Dull Olson Weekes – IBI Group Architects
Portland Public Schools – Franklin HS Modernization

21st Century Learning in an Historic Building
November 20, 2013



FRANKLIN HS – PREFERRED MASTER PLAN OPTION C



program aerial

PPS General Bond Info:

<http://www.pps.k12.or.us/bond/>



Franklin HS Bond Info:

<http://www.pps.k12.or.us/bond/8495.htm>

